

VENUS50 EPA PARTS CATALOG (BODY PARTS)

QJ1E40QMB(老) JCK (Q16-27) -QJ50QT-5-1A (1010201.00301)

QJ1E40QMB(老) JCK (Q16-46) -QJ50QT-5-1A (1010201.01101)

QJ1E40QMB(老) JCK (Q16-66) -QJ50QT-5-1A (1010201.00501)

JCK(Q16-27)-QJ50QT-5-1A

S.P. CATALOG FOR 12.8

COLORS COVERED: RED T7; WHITE WD; CHAMPAGNE Y1; BLACK BH

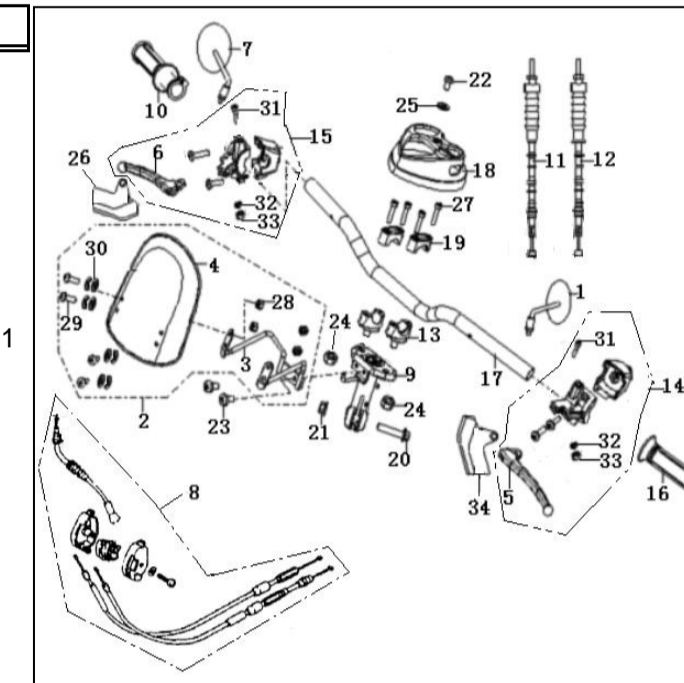
MARKET APPLICABLE: EPA (North America)

Q16- New Zealand

F01 STEERING

| NO. | PART NO.     | DESCRIPTION                | QTY | NOTES                             | Season    | Vehicle Color | OLD CODE |
|-----|--------------|----------------------------|-----|-----------------------------------|-----------|---------------|----------|
| 1   | 40460B50T001 | MIRROR ASSY, REAR VIEW, LH | 1   | for EPA market and NON-EEC market | 2007-2009 |               |          |
| 2   | 65500B50T000 | COWLING ASSY               | 1   | for vehicle with COWLING          | 2007-2009 |               |          |
| 3   | 65510B50T000 | SKELETON ASSY, SUPPORT     | 1   | for vehicle with COWLING          | 2007-2009 |               |          |
| 4   | 65501B50T000 | COWLING                    | 1   | for vehicle with COWLING          | 2007-2009 |               |          |
| 5   | 40002B50T000 | LEVER, L                   | 1   |                                   | 2007-2009 |               |          |
| 6   | 40014B50T000 | LEVER, R                   | 1   |                                   | 2007-2009 |               |          |
| 7   | 40470B50T001 | MIRROR ASSY, REAR VIEW, RH | 1   | for EPA market and NON-EEC market | 2007-2009 |               |          |
| 8   | 40300B130005 | CABLE ASSY., THROTTLE      | 1   |                                   | 2007-2009 |               |          |
| 9   | 40180B50T000 | MOUNTING SEAT, HANDLEBAR   | 1   |                                   | 2007-2009 |               |          |
| 10  | 40210B50T000 | GRIP ASSY, RH              | 1   | for EPA                           | 2007-2009 |               |          |
| 11  | 40250B50T000 | CABLE ASSY., FRONT BRAKE   | 1   |                                   | 2007-2009 |               |          |
| 12  | 40270B50T000 | CABLE ASSY., REAR BRAKE    | 1   |                                   | 2007-2009 |               |          |
| 13  | 43013B50T000 | BRACKET, HANDLEBAR, LOWER  | 2   |                                   | 2007-2009 |               |          |
| 14  | 40500B50T000 | SWITCH ASSY., LH           | 1   |                                   | 2007-2009 |               |          |
| 15  | 40600B50T002 | SWITCH ASSY., RH           | 1   | for EPA                           | 2007-2009 |               |          |
| 16  | 40001B50T000 | GRIP, LH                   | 1   | for EPA                           | 2007-2009 |               |          |
| 17  | 40101B50T000 | HANDLEBAR                  | 1   |                                   | 2007-2009 |               |          |
| 18  | 43005B50T000 | COVER, MOUNTING SEAT       | 1   |                                   | 2007-2009 |               |          |
| 19  | 43014B50T000 | BRACKET, HANDLEBAR, UPPER  | 2   |                                   | 2007-2009 |               |          |
| 20  | B01091004565 | BOLT 10X1.25X45MM          | 1   |                                   | 2007-2009 |               |          |
| 21  | B04171012555 | NUT 10X1.25MM              | 1   |                                   | 2007-2009 |               |          |
| 22  | B02000501225 | SCREW 5X12MM               | 1   |                                   | 2007-2009 |               |          |
| 23  | B01070601265 | SCREW 6X12MM               | 2   |                                   | 2007-2009 |               |          |
| 24  | B04171012555 | NUT 10X1.25MM              | 2   |                                   | 2007-2009 |               |          |
| 25  | B07030000505 | WASHER 5                   | 1   |                                   | 2007-2009 |               |          |
| 26  | 40008B0ET000 | JACKET, BRAKE CABLE        | 1   |                                   | 2007-2009 |               |          |
| 27  | B0107060306A | BOLT 6X30MM                | 4   |                                   | 2007-2009 |               |          |
| 28  | B04070500055 | NUT 5MM                    | 4   | for vehicle with COWLING          | 2007-2009 |               |          |
| 29  | B02060501425 | SCREW 5X14MM               | 4   | for vehicle with COWLING          | 2007-2009 |               |          |
| 30  | 65509B50T000 | RUBBER WASHER              | 4   | for vehicle with COWLING          | 2007-2009 |               |          |
| 31  | 40015B50T000 | SCREW                      | 2   |                                   | 2007-2009 |               |          |
| 32  | B07000000505 | WASHER 5                   | 2   |                                   | 2007-2009 |               |          |
| 33  | B04000500063 | NUT 5MM                    | 2   |                                   | 2007-2009 |               |          |
| 34  | 40007B0ET000 | JACKET, LEVER L            | 1   |                                   | 2007-2009 |               |          |

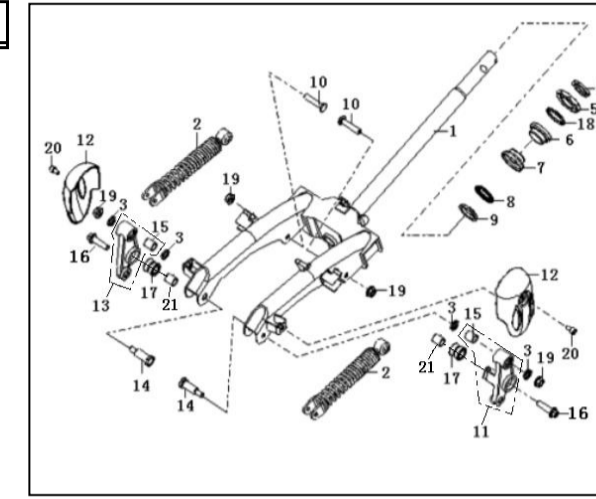
40300B50T001



B01070603064

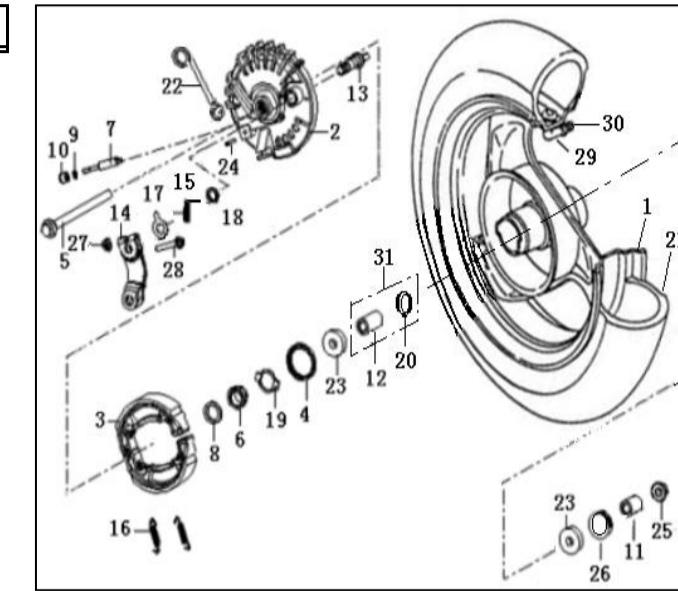
**F02 FRONT FORK**

| NO. | PART NO.     | DESCRIPTION                | QTY | NOTES                         | Season    | Vehicle Color | OLD CODE     |
|-----|--------------|----------------------------|-----|-------------------------------|-----------|---------------|--------------|
| 1   | 43100B50T000 | LOWER BRACKET ASSY.        | 1   |                               | 2007-2009 |               |              |
| 2   | 43200B50T000 | FRONT CUSHION ASSY         | 2   |                               | 2007-2009 |               |              |
| 3   | 43910B50T000 | SEAL ASSY                  | 4   |                               | 2007-2009 |               |              |
| 4   | 43017J0ET000 | NUT, STEERING STEM         | 1   |                               | 2007-2009 |               |              |
| 5   | 43001B50T000 | RACE, UPPER, UPPER BEARING | 1   |                               | 2007-2009 |               |              |
| 6   | 43002B50T000 | RACE, LOWER, UPPER BEARING | 1   |                               | 2007-2009 |               |              |
| 7   | 43003B50T000 | RACE, UPPER, LOWER BEARING | 1   |                               | 2007-2009 |               |              |
| 8   | 43131B50T000 | RETAINER, BEARING          | 1   |                               | 2007-2009 |               |              |
| 9   | 43004B50T000 | RACE,LOWER,LOWER BEARING   | 1   |                               | 2007-2009 |               |              |
| 10  | 08011B50T000 | BOLT                       | 2   |                               | 2007-2009 |               |              |
| 11  | 43950B50T000 | LEVER, LH. FRONT FORK      | 1   |                               | 2007-2009 |               |              |
| 12  | 43012B50T000 | DECORATION PLATE           | 2   |                               | 2007-2009 |               |              |
| 13  | 43900B50T000 | LEVER, RH. FRONT FORK      | 1   |                               | 2007-2009 |               |              |
| 14  | 08012B50T000 | BOLT                       | 2   |                               | 2007-2009 |               |              |
| 15  | 43901B50T000 | BUSH                       | 2   |                               | 2007-2009 |               | 43902B50T000 |
| 16  | 08013B50T000 | BOLT M8X32                 | 2   |                               | 2007-2009 |               |              |
| 17  | 43904B50T000 | WASHER, RUBBER             | 2   |                               | 2007-2009 |               |              |
| 18  | B06010110000 | BALL, STEEL                | 25  | 25 pcs/set,order as per piece | 2007-2009 |               |              |
| 19  | B04070800055 | NUT 8MM                    | 4   |                               | 2007-2009 |               |              |
| 20  | B01090601665 | BOLT 6X16MM                | 2   |                               | 2007-2009 |               | B01090601664 |
| 21  | 43901B50T000 | BUSH                       | 2   |                               | 2007-2009 |               | 43902B50T000 |



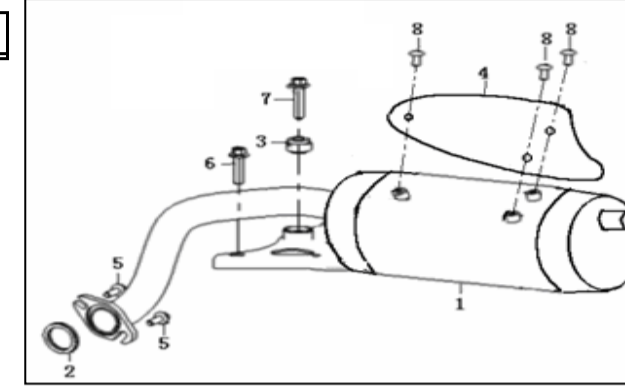
F03 FRONT WHEEL

| NO. | PART NO.     | DESCRIPTION                        | QTY    | NOTES                             | Season    | Vehicle Color | OLD CODE     |
|-----|--------------|------------------------------------|--------|-----------------------------------|-----------|---------------|--------------|
| 1   | 44100B50T001 | RIM, FRONT WHEEL(DOT)              | 1      | for EPA market and NON-EEC market | 2007-2009 |               |              |
| 2   | 44400B0AT000 | PANEL ASSY.                        | 1      | for EPA market and NON-EEC market | 2007-2009 |               |              |
| 3   | 44500B0AT000 | BRAKE SHOE                         | 1 pair | 2pcs/pair, order as per pair      | 2007-2009 |               |              |
| 4   | 44300B0AT000 | DUST SEAL                          | 1      |                                   | 2007-2009 |               |              |
| 5   | 44004B50T000 | AXLE, FRONT WHEEL                  | 1      |                                   | 2007-2009 |               |              |
| 6   | 44201B0AT000 | GEAR, SPEEDOMETER                  | 1      |                                   | 2007-2009 |               |              |
| 7   | 44202B0AT000 | PINION, SPEEDOMETER                | 1      |                                   | 2007-2009 |               |              |
| 8   | 44203B0AT000 | WASHER, GEAR                       | 1      |                                   | 2007-2009 |               |              |
| 9   | 44204B0AT000 | WASHER, PINION                     | 1      |                                   | 2007-2009 |               |              |
| 10  | 44205B0AT000 | BUSH, PINION                       | 1      |                                   | 2007-2009 |               |              |
| 11  | 44016B50T000 | SPACER, RH.                        | 1      |                                   | 2007-2009 |               |              |
| 12  | 44601B0AT000 | BUSH, MID                          | 1      |                                   | 2007-2009 |               |              |
| 13  | 44003B0AT000 | CAMSHAFT, FR. BRAKE                | 1      |                                   | 2007-2009 |               |              |
| 14  | 44007B0AT000 | LEVER, FR. BRAKE                   | 1      |                                   | 2007-2009 |               |              |
| 15  | 44008B0AT000 | SPRING, BRAKE RETURN               | 1      |                                   | 2007-2009 |               |              |
| 16  | 44001B0AT000 | SPRING, BRAKE SHOE                 | 2      |                                   | 2007-2009 |               |              |
| 17  | 44002B0AT000 | INDICATOR, WEAR                    | 1      |                                   | 2007-2009 |               |              |
| 18  | 44015B0AT000 | SEAL, CAMSHAFT                     | 1      |                                   | 2007-2009 |               |              |
| 19  | 44023B0AT000 | PLATE, DRIVING                     | 1      |                                   | 2007-2009 |               |              |
| 20  | 44602B0AT000 | FLANGE SPACER                      | 1      |                                   | 2007-2009 |               |              |
| 21  | B140104F10AA | TIRE (90/90-10) (DOT & 75R-000209) | 1      |                                   | 2007-2009 |               | B140504F10BB |
| 22  | 44019B50T000 | CLIP                               | 1      |                                   | 2007-2009 |               |              |
| 23  | B12046020000 | BEARING                            | 2      |                                   | 2007-2009 |               |              |
| 24  | B02020502025 | SCREW 5X20MM                       | 1      |                                   | 2007-2009 |               |              |
| 25  | B04171012555 | NUT 10X1.25MM                      | 1      |                                   | 2007-2009 |               |              |
| 26  | 44300B50T000 | OIL SEAL                           | 1      |                                   | 2007-2009 |               |              |
| 27  | B04170600055 | NUT 6MM                            | 1      |                                   | 2007-2009 |               |              |
| 28  | B01090603565 | BOLT 6X35MM                        | 1      |                                   | 2007-2009 |               | B01010603525 |
| 29  | B1403Z201120 | RIM, VALVE                         | 1      |                                   | 2007-2009 |               | B1403Z201100 |
| 30  | B1404Z2011C0 | CAP, VALVE                         | 1      |                                   | 2007-2009 |               |              |
| 31  | 44600B0AT000 | SPACER ASSY,FR.WHEEL               | 1      |                                   | 2007-2009 |               |              |



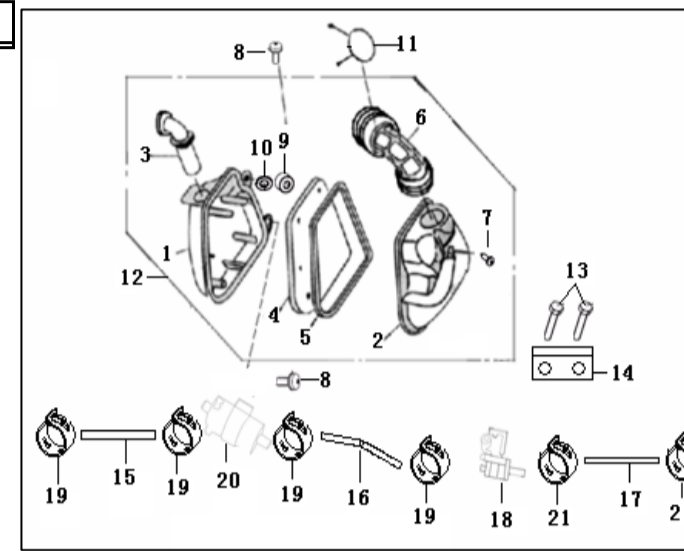
**F04 MUFFLER**

| NO. | PART NO.     | DESCRIPTION             | QTY | NOTES | Season    | Vehicle Color | OLD CODE     |
|-----|--------------|-------------------------|-----|-------|-----------|---------------|--------------|
| 1   | 47100B0DT001 | MUFFLER WITH ACCELERANT | 1   |       | 2007-2009 |               |              |
| 2   | 47800B0DT000 | GASKET,EXHAUST PIPE     | 1   |       | 2007-2009 |               |              |
| 3   | 47740B0ET000 | BUSH ASSY               | 1   |       | 2007-2009 |               |              |
| 4   | 47760B0CT000 | COVER,MUFFLER           | 1   |       | 2007-2009 |               |              |
| 5   | B0109060166L | BOLT 6X16MM             | 2   |       | 2007-2009 |               | B01070601665 |
| 6   | B01070802065 | BOLT 8X20MM             | 1   |       | 2007-2009 |               |              |
| 7   | B01070803065 | BOLT 8X30MM             | 1   |       | 2007-2009 |               |              |
| 8   | B0107060086A | BOLT 6X8MM              | 3   |       | 2007-2009 |               | B01070600865 |



**F05 AIR CLEANER**

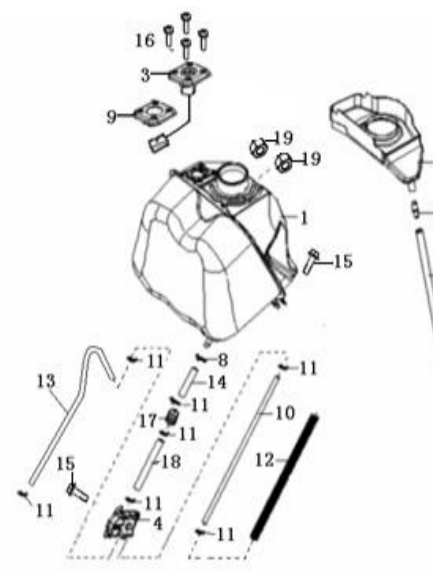
| NO. | PART NO.     | DESCRIPTION          | QTY | NOTES | Season    | Vehicle Color | OLD CODE     |
|-----|--------------|----------------------|-----|-------|-----------|---------------|--------------|
| 1   | 49101B0AT000 | CASE, AIR CLEANER    | 1   |       | 2007-2009 |               |              |
| 2   | 49001B0AT000 | COVER, AIR CLEANER   | 1   |       | 2007-2009 |               |              |
| 3   | 49002B130001 | GUIDE PIPE (φ16)     | 1   |       | 2007-2009 |               | 49002B0AT000 |
| 4   | 49200B0AT000 | FILTER               | 1   |       | 2007-2009 |               |              |
| 5   | 49013B0AT000 | SEAL GASKET          | 1   |       | 2007-2009 |               |              |
| 6   | 49005B0AT000 | CONNECTING PIPE      | 1   |       | 2007-2009 |               |              |
| 7   | B05075001605 | TAPPING SCREW        | 4   |       | 2007-2009 |               | B05075002505 |
| 8   | B13140602005 | SCREW 6X20MM         | 2   |       | 2007-2009 |               |              |
| 9   | 49004B0AT000 | BUSH                 | 2   |       | 2007-2009 |               |              |
| 10  | 49022B0AT000 | GROMMET              | 2   |       | 2007-2009 |               |              |
| 11  | 49016F0BT000 | CLIP 42.5            | 1   |       | 2007-2009 |               |              |
| 12  | 49100B130001 | AIR CLEANER ASSY.    | 1   |       | 2007-2009 |               | 49000B0AT000 |
| 13  | B01090601265 | SCREW 6X12MM         | 2   |       | 2007-2009 |               | B0109061265  |
| 14  | 57051B2GT000 | PLATE, ONE WAY VALVE | 1   |       | 2007-2009 |               |              |
| 15  | 49853BMMT001 | HOSE II 85MM         | 1   |       | 2007-2009 |               |              |
| 16  | 49852BMMT001 | HOSE I 380MM         | 1   |       | 2007-2009 |               |              |
| 17  | 49851BMMT001 | HOSE 550MM           | 1   |       | 2007-2009 |               |              |
| 18  | 49840B0ES000 | ONE WAY VALVE II     | 1   |       | 2007-2009 |               |              |
| 19  | 49805BMBT000 | SPRING II LOCK φ17.5 | 4   |       | 2007-2009 |               |              |
| 20  | 49870B2GT000 | AIR CLEANER, SMALL   | 1   |       | 2007-2009 |               |              |
| 21  | 49855B0ES000 | SPRING II LOCK φ16.5 | 2   |       | 2007-2009 |               |              |



F06 FUEL TANK

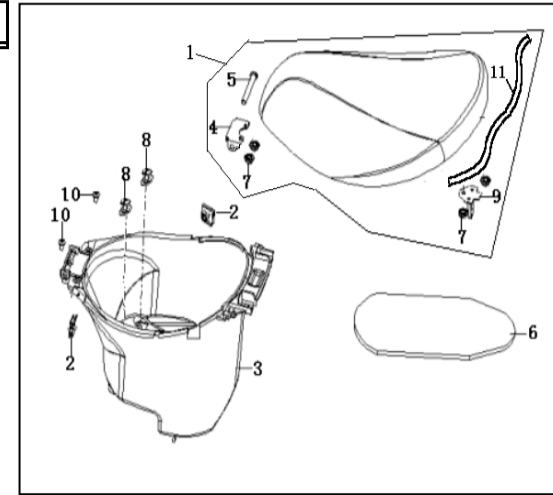
| NO. | PART NO.     | DESCRIPTION                           | QTY | NOTES | Season    | Vehicle Color | OLD CODE |
|-----|--------------|---------------------------------------|-----|-------|-----------|---------------|----------|
| 1   | 50100B50T000 | FUEL TANK COMP.                       | 1   |       | 2007-2009 |               |          |
| 3   | 50800B50T000 | GAUGE ASSY, FUEL LEVEL                | 1   |       | 2007-2009 |               |          |
| 4   | 50320B50T000 | SHUTOFF ASSY., FUEL TANK              | 1   |       | 2007-2009 |               |          |
| 5   | 50012B50T000 | PIPE, WATER 7X11X486                  | 1   |       | 2007-2009 |               |          |
| 6   | 50013B50T000 | CONNECT PIPE                          | 1   |       | 2007-2009 |               |          |
| 7   | 50011B50T000 | CUSHION, ANTI-WATER                   | 1   |       | 2007-2009 |               |          |
| 8   | B17010090003 | CLIPφ9                                | 6   |       | 2007-2009 |               |          |
| 9   | 50004B50T000 | RUBBER JOINT., GAUGE                  | 1   |       | 2007-2009 |               |          |
| 10  | 50301B920001 | FUEL HOSEII φ5X10X250 mark C-U-07-003 | 1   |       | 2007-2009 |               |          |
| 11  | 50307J00P000 | CLIP 8                                | 7   |       | 2007-2009 |               |          |
| 12  | 50324B50T000 | SPRING, AIR HOSE                      | 1   |       | 2007-2009 |               |          |
| 13  | B16010422801 | FUEL HOSE φ4X2X280                    | 1   |       | 2007-2009 |               |          |
| 14  | B16010520601 | FUEL HOSE V φ5X10X60 mark C-U-07-003  | 1   |       | 2007-2009 |               |          |
| 15  | B01090601665 | BOLT 6X16MM                           | 2   |       | 2007-2009 |               |          |
| 16  | B13140501405 | BOLT ASSY. 5X14MM                     | 4   |       | 2007-2009 |               |          |
| 17  | 50340B50T000 | FILTER, FUEL                          | 1   |       | 2007-2009 |               |          |
| 18  | 50306K310000 | FUEL HOSEVI φ5X10X115 mark C-U-07-003 | 1   |       | 2007-2009 |               |          |
| 19  | B04070600055 | NUT M6                                | 2   |       | 2007-2009 |               |          |

50701B50T000  
B01090601664



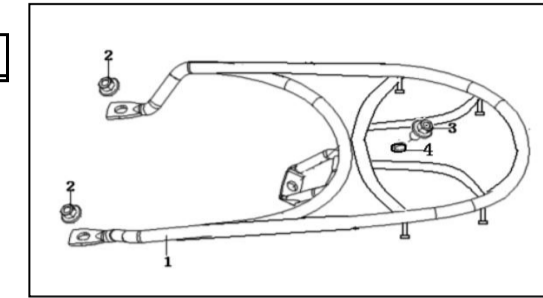
F07 SEAT

| NO. | PART NO.     | DESCRIPTION          | QTY | NOTES                   | Season    | Vehicle Color | OLD CODE     |
|-----|--------------|----------------------|-----|-------------------------|-----------|---------------|--------------|
| 1   | 51100B50T000 | SEAT COMP. (NO MARK) | 1   | for EPA and EEC2 market | 2007-2008 |               | 51100B13000C |
| 1   | 51100B130001 | SEAT COMP.           | 1   | for EPA 2009version     | 2009      |               |              |
| 2   | 65803J0ET000 | NUT ASSY. 6MM        | 2   |                         | 2007-2009 |               |              |
| 3   | 51004B50T000 | LUGGAGE BOX          | 1   |                         | 2007-2009 |               |              |
| 4   | 51083B50T000 | PLATE, CONNECTING    | 1   |                         | 2007-2009 |               |              |
| 5   | 51001B50T000 | PIN, FIXING          | 1   |                         | 2007-2009 |               |              |
| 6   | 51006B50T000 | COVER, LOWER         | 1   |                         | 2007-2009 |               |              |
| 7   | B04070600053 | NUT 6MM              | 3   |                         | 2007-2009 |               |              |
| 8   | B13060601605 | BOLT ASSY. 6X16MM    | 2   |                         | 2007-2009 |               |              |
| 9   | 51070B50T000 | BRACKET COMP.        | 1   |                         | 2007-2009 |               |              |
| 10  | B05074801605 | SCREW 4.8X16MM       | 2   |                         | 2007-2009 |               | B05075001205 |
| 11  | 51490B50T001 | AIRPROOF STRIP       | 1   |                         | 2007-2009 |               |              |



**F08 LUGGAGE CARRIER**

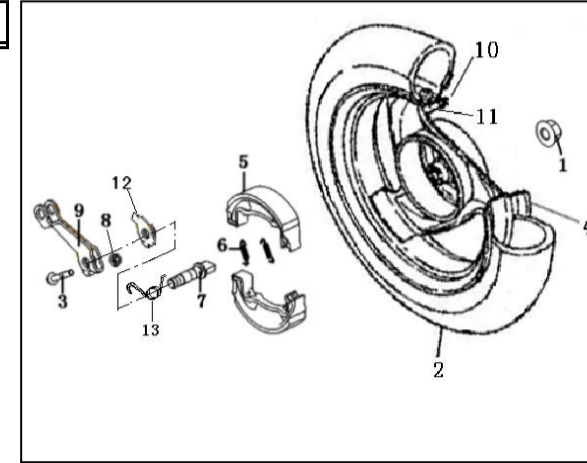
| NO. | PART NO.     | DESCRIPTION         | QTY | NOTES | Season    | Vehicle Color | OLD CODE     |
|-----|--------------|---------------------|-----|-------|-----------|---------------|--------------|
| 1   | 52100B50T000 | BODY, REAR CARRIER. | 1   |       | 2007-2009 |               | 52100B50T001 |
| 2   | B04070600055 | NUT 6MM             | 2   |       | 2007-2009 |               |              |
| 3   | B01070801665 | BOLT 8X16MM         | 1   |       | 2007-2009 |               | B01070801664 |
| 4   | B07030000805 | WASHER 8MM          | 1   |       | 2007-2009 |               | B07030000804 |





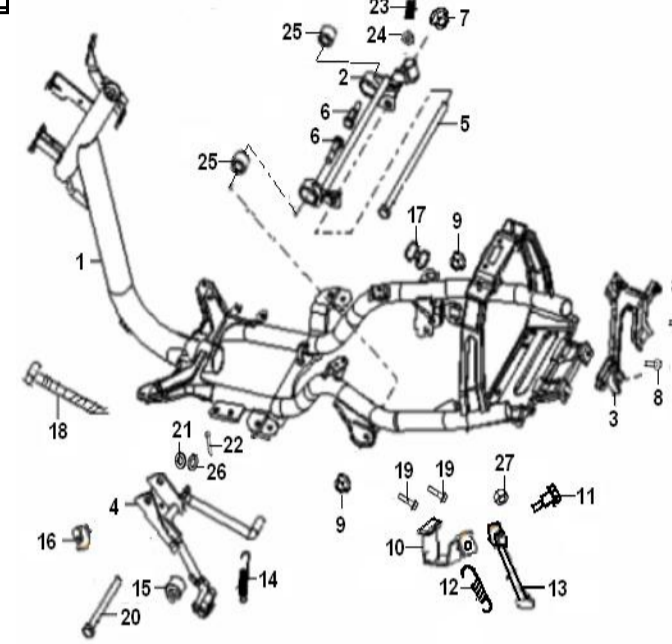
F09 REAR WHEEL

| NO. | PART NO.     | DESCRIPTION                        | QTY | NOTES | Season    | Vehicle Color | OLD CODE     |
|-----|--------------|------------------------------------|-----|-------|-----------|---------------|--------------|
| 1   | B04171415054 | NUT 14X1.5MM                       | 1   |       | 2007-2009 |               |              |
| 2   | B140104F10AA | TIRE (90/90-10) (DOT & 75R-000209) | 1   |       | 2007-2009 |               | B140504F10BB |
| 3   | B01020603265 | BOLT 6X32MM                        | 1   |       | 2007-2009 |               |              |
| 4   | 54100BMLT001 | RIM, REAR WHEEL(DOT)               | 1   |       | 2007-2009 |               |              |
| 5   | 44500B0AT000 | BRAKE SHOE                         | 1   |       | 2007-2009 |               |              |
| 6   | 44001B0AT000 | SPRING, BRAKE SHOE                 | 2   |       | 2007-2009 |               |              |
| 7   | 54003B0AT000 | CAMSHAFT, RR.. BRAKE               | 1   |       | 2007-2009 |               |              |
| 8   | B04170600055 | NUT 6MM                            | 1   |       | 2007-2009 |               |              |
| 9   | 54007B0AT000 | LEVER, RR. BRAKE                   | 1   |       | 2007-2009 |               |              |
| 10  | B1404Z2011C0 | CAP, VALVE                         | 1   |       | 2007-2009 |               |              |
| 11  | B1403Z201120 | RIM, VALVE                         | 1   |       | 2007-2009 |               | B1403Z201100 |
| 12  | 54002B0AT000 | INDICATOR WEAR                     | 1   |       | 2007-2009 |               |              |
| 13  | 54008B50T000 | TENSION SPRING                     | 1   |       | 2007-2009 |               |              |



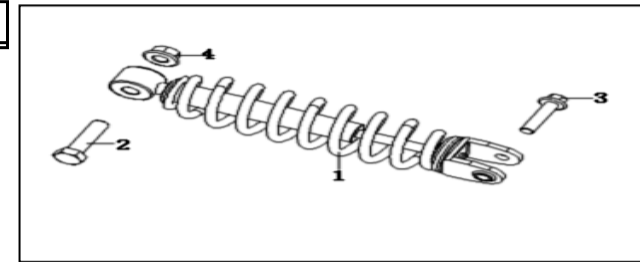
F10 FRAME

| NO. | PART NO.     | DESCRIPTION                | QTY | NOTES | Season    | Vehicle Color | OLD CODE     |
|-----|--------------|----------------------------|-----|-------|-----------|---------------|--------------|
| 1   | 57100B50T000 | FRAME BODY ASSY.           | 1   |       | 2007-2009 |               |              |
| 2   | 58300B50T000 | BRACKET, ENGINE            | 1   |       | 2007-2009 |               |              |
| 3   | 57760B50T000 | BRACKET ASSY, REAR CARRIER | 1   |       | 2007-2009 |               |              |
| 4   | 58520B0DT000 | MAIN STAND ASSY            | 1   |       | 2007-2009 |               |              |
| 5   | 58303B50T000 | SHAFT, ENGINE BRACKET      | 1   |       | 2007-2009 |               |              |
| 6   | 58301B50T000 | MOUNTING BOLT, BRACKET     | 2   |       | 2007-2009 |               |              |
| 7   | B04171212554 | LOCK NUT M12X1.25          | 1   |       | 2007-2009 |               | B04171212555 |
| 8   | B01090601665 | BOLT 6X16MM                | 2   |       | 2007-2009 |               | B01090601664 |
| 9   | B04171012555 | NUT                        | 2   |       | 2007-2009 |               |              |
| 10  | 58030B50T000 | SIDE STAND SEAT.           | 1   |       | 2007-2009 |               |              |
| 11  | 57005B50T000 | BOLT                       | 1   |       | 2007-2009 |               |              |
| 12  | 57003B50T000 | RETURN SPRING              | 1   |       | 2007-2009 |               |              |
| 13  | 58700B50T000 | SIDE STAND ASSY.           | 1   |       | 2007-2009 |               |              |
| 14  | 58502B50T000 | SPRING, MAIN STAND         | 1   |       | 2007-2009 |               |              |
| 15  | 58507B50T000 | ABSORBER PLATE, MAIN STAND | 1   |       | 2007-2009 |               |              |
| 16  | 40022B0DT000 | CLIP                       | 1   |       | 2007-2009 |               |              |
| 17  | 57014B50T000 | ABSORBER WASHER            | 1   |       | 2007-2009 |               |              |
| 18  | 96001B50T000 | CLIP 250                   | 3   |       | 2007-2009 |               |              |
| 19  | B01090802065 | BOLT 6X20MM                | 2   |       | 2007-2009 |               | B04070800055 |
| 20  | 58501BJ0T000 | AXLE, MAIN STAND           | 1   |       | 2007-2009 |               | 58501F0AT000 |
| 21  | 58508B0DT000 | WASHER                     | 1   |       | 2007-2009 |               |              |
| 22  | 58513B0DT000 | SPLIT PIN                  | 1   |       | 2007-2009 |               | B090025020A2 |
| 23  | 58304B50T000 | SPRING                     | 1   |       | 2007-2009 |               |              |
| 24  | 58302B50T000 | DAMPER                     | 1   |       | 2007-2009 |               |              |
| 25  | 58340B50T000 | BUFFER WASHER              | 2   |       | 2007-2009 |               |              |
| 26  | B07030001005 | WASHER 10MM                | 1   |       | 2007-2009 |               | B07020001005 |
| 27  | B04070800055 | NUT 8MM                    | 1   |       | 2007-2009 |               |              |



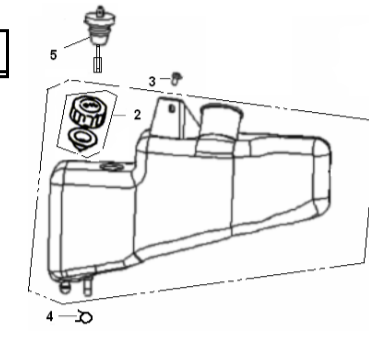
F11 REAR ABSORBER

| NO. | PART NO.     | DESCRIPTION        | QTY | NOTES | Season    | Vehicle Color | OLD CODE |
|-----|--------------|--------------------|-----|-------|-----------|---------------|----------|
| 1   | 63000B50T000 | REAR CUSHION COMP. | 1   |       | 2007-2009 |               |          |
| 2   | 08014J0ET000 | BOLT 10X1.25X40MM  | 1   |       | 2007-2009 |               |          |
| 3   | B01070803265 | BOLT 8X32MM        | 1   |       | 2007-2009 |               |          |
| 4   | B04071012555 | NUT 10X1.25MM      | 1   |       | 2007-2009 |               |          |



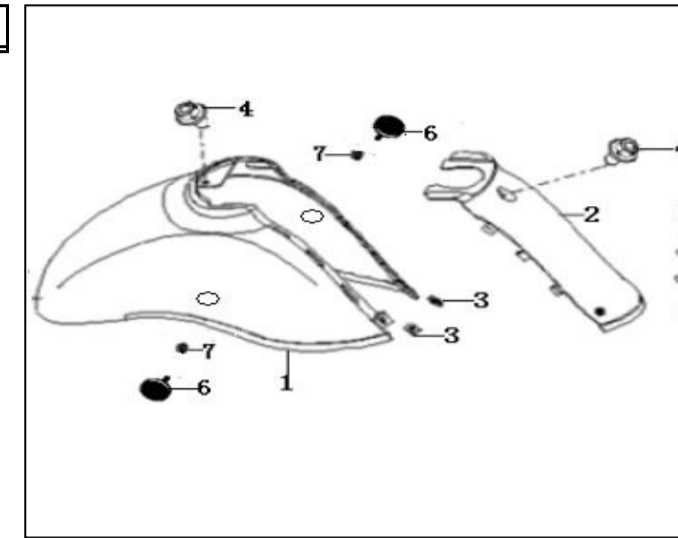
F12 OIL TANK

| NO. | PART NO.     | DESCRIPTION         | QTY | NOTES | Season    | Vehicle Color | OLD CODE     |
|-----|--------------|---------------------|-----|-------|-----------|---------------|--------------|
| 1   | 64001B50T000 | CASE, OIL TANK      | 1   |       | 2007-2009 |               |              |
| 2   | 64090G0MP000 | Cap assy., oil tank | 1   |       | 2007-2009 |               |              |
| 3   | B01090601665 | BOLT 6X16MM         | 1   |       | 2007-2009 |               | B01090601664 |
| 4   | 50307J00P000 | CLIP 8              | 1   |       | 2007-2009 |               |              |
| 5   | 64100B50T000 | GAUGE,OIL LEVEL     | 1   |       | 2007-2009 |               |              |



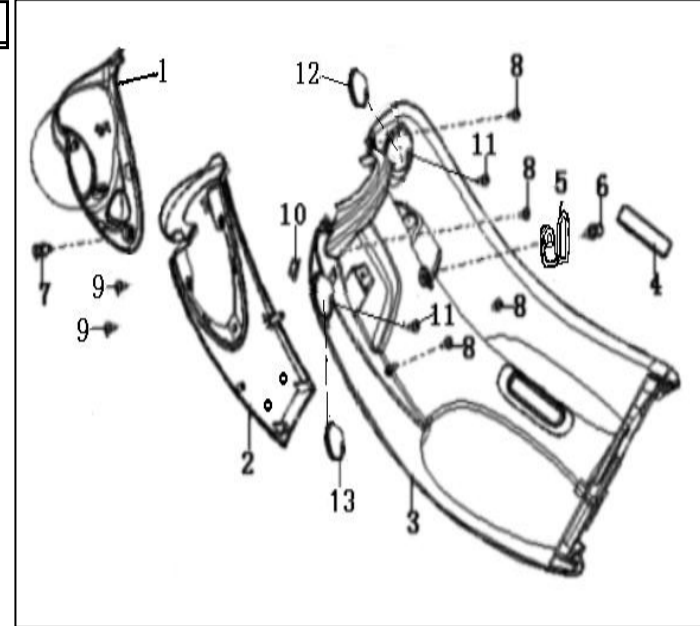
F13 FRONT FENDER

| NO. | PART NO.     | DESCRIPTION                   | QTY | NOTES                      | Season    | Vehicle Color | OLD CODE     |
|-----|--------------|-------------------------------|-----|----------------------------|-----------|---------------|--------------|
| 1   | 65101B50TT70 | FRONT FENDER,FR.SOLID PINK T7 | 1   | for SOLID PINK T7 vehicles | 2007-2009 | T7            |              |
| 1   | 65101B50TBH0 | FRONT FENDER,FR.BLACK BH      | 1   | for black BH vehicles      | 2007-2009 | BH            |              |
| 1   | 65101B50TW10 | FRONT FENDER,FR.WHITE W1      | 1   | for white W1 vehicles      | 2007-2009 | W1            |              |
| 1   | 65101B50TY10 | FRONT FENDER,FR.CHAMPAGNE Y1  | 1   | for CHAMPAGNE Y1           | 2007-2009 | Y1            | 65101B50TY11 |
| 1   | 65101B50TB21 | FRONT FENDER,FR.BLACK B2      | 1   | for black B2 vehicles      | 2008      | B2            |              |
| 1   | 65101B50TLO1 | FRONT FENDER,FR.BLUE LO       | 1   | for blue LO vehicles       | 2008      | LO            | 65101B13LO00 |
| 1   | 65101B50TTV1 | FRONT FENDER,FR.PINK TV       | 1   | for pink TV vehicles       | 2008      | TV            | 65101B13TV00 |
| 2   | 65106B50TT70 | FRONT FENDER,RR.SOLID PINK T7 | 1   | for SOLID PINK T7 vehicles | 2007-2009 | T7            |              |
| 2   | 65106B50TBH0 | FRONT FENDER,RR.BLACK BH      | 1   | for black BH vehicles      | 2007-2009 | BH            |              |
| 2   | 65106B50TW10 | FRONT FENDER,RR.WHITE W1      | 1   | for white W1 vehicles      | 2007-2009 | W1            | 65106B50TWD  |
| 2   | 65106B50TY10 | FRONT FENDER,RR.CHAMPAGNE Y1  | 1   | for CHAMPAGNE Y1 vehicles  | 2007-2009 | Y1            | 65106B50TY11 |
| 2   | 65106B50TB20 | FRONT FENDER,RR.BLACK B2      | 1   | for black B2 vehicles      | 2008      | B2            |              |
| 2   | 65106B50TLO0 | FRONT FENDER,RR.BLUE LO       | 1   | for blue LO vehicles       | 2008      | LO            |              |
| 2   | 65106B50TTV0 | FRONT FENDER,RR.PINK TV       | 1   | for pink TV vehicles       | 2008      | TV            |              |
| 3   | 65801J0ET000 | CLIP, SCREW 4MM               | 2   |                            | 2007-2009 |               |              |
| 4   | B01090601665 | BOLT 6X16MM                   | 2   |                            | 2007-2009 |               | B01090601664 |
| 5   | B05074001205 | SCREW GB845                   | 2   |                            | 2007-2009 |               |              |
| 6   | 86300T180001 | SIDE REFLEX REFLECTOR         | 2   |                            | 2007-2009 |               | 86300B0DT000 |
| 7   | B04070600064 | NUT 6MM                       | 2   |                            | 2007-2009 |               |              |



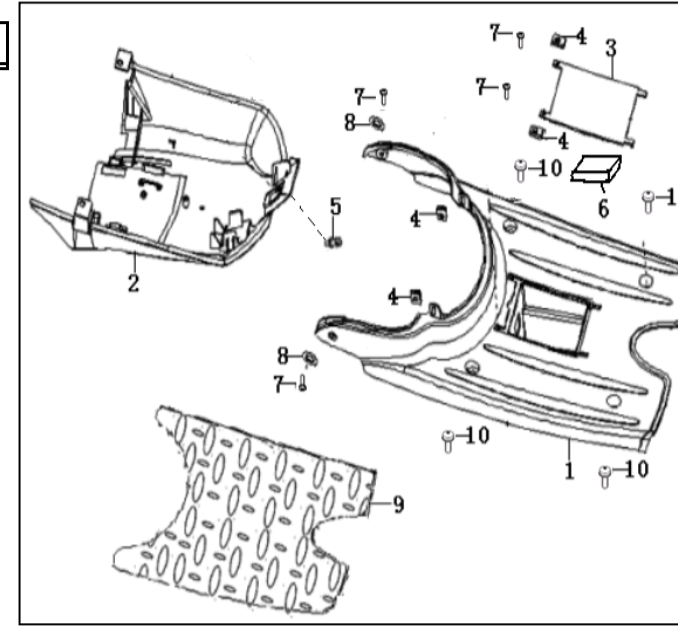
F14.1 FRONT COVER for EPA and NON-EEC market

| NO. | PART NO.     | DESCRIPTION                          | QTY | NOTES                     | Season    | Vehicle Color | OLD CODE     |
|-----|--------------|--------------------------------------|-----|---------------------------|-----------|---------------|--------------|
| 1   | 80004B50T000 | COVER, HEADLAMP                      | 1   |                           |           |               |              |
| 1   | 80004B13WG0  | COVER, HEADLAMP (WHITE WG)           | 1   | for pink TV vehicles      | 2009      | TV            |              |
| 1   | 80004B13BH00 | COVER, HEADLAMP (BLACK BH)           | 1   | for EPA,black BH vehicles | 2008-2009 | BH            |              |
| 2   | 65301B50T000 | COVER, FRONT                         | 1   |                           |           |               |              |
| 2   | 65301B13DC00 | COVER, FRONT                         | 1   | for pink TV vehicles      | 2009      | TV            |              |
| 2   | 65301B13BH00 | COVER, FRONT (BLACK BH)              | 1   | for EPA,black BH vehicles | 2008-2009 | BH            |              |
| 3   | 65302B50TT70 | COVER, LOWER SOLID PINK T7           | 1   | for red T7 vehicle        | 2007-2009 | T7            |              |
| 3   | 65302B50TY10 | COVER, LOWER CHAMPAGNE Y1            | 1   | for CHAMPAGNE Y1 vehicle  | 2007-2009 | Y1            |              |
| 3   | 65302B50TBH0 | COVER, LOWER BLACK BH                | 1   | for black BH vehicle      | 2007-2009 | BH            |              |
| 3   | 65302B50TW10 | COVER, LOWER WHITE W1                | 1   | for white W1 vehicles     | 2007-2009 | W1            | 65302B50TWD  |
| 3   | 65302B50TLO0 | COVER, LOWER BLUE LO                 | 1   | for blue LO vehicles      | 2008-2009 | LO            | 65302B13LO00 |
| 3   | 65302B13WG0  | COVER, LOWER WHITE WG                | 1   | for pink TV vehicles      | 2009      | TV            |              |
| 4   | 65403B50TT70 | CAP, FRAME NUMBER SOLID PINK T7      | 1   | for red T7 vehicle        | 2007-2009 | T7            |              |
| 4   | 65403B50TY10 | CAP, FRAME NUMBER CHAMPAGNE Y1       | 1   | for CHAMPAGNE Y1 vehicle  | 2007-2009 | Y1            |              |
| 4   | 65403B50TBH0 | CAP, FRAME NUMBER BLACK BH           | 1   | for black BH vehicle      | 2007-2009 | BH            |              |
| 4   | 65403B50TW10 | CAP, FRAME NUMBER WHITE W1           | 1   | for white W1 vehicles     | 2007-2009 | W1            | 65403B50TWD  |
| 4   | 65403B50TLO0 | CAP, FRAME NUMBER BLUE LO            | 1   | for blue LO vehicles      | 2008-2009 | LO            | 65403B13LO00 |
| 4   | 65403B13WG00 | CAP, FRAME NUMBER WHITE WG           | 1   | for pink TV vehicles      | 2009      | TV            |              |
| 5   | 03310B50T000 | HOOK, HELMET                         | 1   |                           | 2007-2009 |               |              |
| 6   | B0206060252A | SCREW 6X25MM                         | 1   |                           | 2007-2009 |               | B02060602524 |
| 7   | B0206060252A | SCREW 6X25MM                         | 1   |                           | 2007-2009 |               | B02060602524 |
| 8   | B05074801605 | SELF-TAPPING SCREW                   | 4   |                           | 2007-2009 |               | B05075001205 |
| 9   | B05074801605 | SELF-TAPPING SCREW 4.8X16            | 2   |                           | 2007-2009 |               | B05075001205 |
| 10  | B04070600055 | NUT 6MM                              | 1   |                           | 2007-2009 |               |              |
| 11  | B05074001605 | SELF-TAPPING SCREW 4X16              | 2   |                           | 2007-2009 |               | B05070401205 |
| 12  | 65309B50TT70 | COVER, TURN SIGNAL CAP SOLID PINK T7 | 1   | for red T7 vehicle        | 2007-2009 | T7            |              |
| 12  | 65309B50TY10 | COVER, TURN SIGNAL CAP CHAMPAGNE Y1  | 1   | for CHAMPAGNE Y1 vehicle  | 2007-2009 | Y1            |              |
| 12  | 65309B50TBH0 | COVER, TURN SIGNAL CAP BLACK BH      | 1   | for black BH vehicle      | 2007-2009 | BH            |              |
| 12  | 65309B50TW10 | COVER, TURN SIGNAL CAP WHITE W1      | 1   | for white W1 vehicles     | 2007-2009 | W1            | 65309B50TWD  |
| 13  | 65303B50TT70 | COVER, TURN SIGNAL CAP SOLID PINK T7 | 1   | for red T7 vehicle        | 2007-2009 | T7            |              |
| 13  | 65303B50TY10 | COVER, TURN SIGNAL CAP CHAMPAGNE Y1  | 1   | for CHAMPAGNE Y1 vehicle  | 2007-2009 | Y1            |              |
| 13  | 65303B50TBH0 | COVER, TURN SIGNAL CAP BLACK BH      | 1   | for black BH vehicle      | 2007-2009 | BH            |              |
| 13  | 65303B50TW10 | COVER, TURN SIGNAL CAP WHITE W1      | 1   | for white W1 vehicles     | 2007-2009 | W1            | 65303B50TWD  |



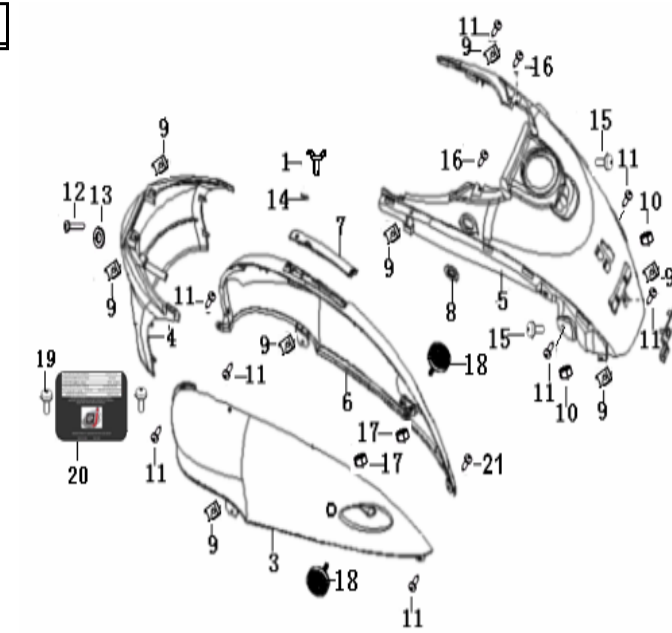
**F15 FOOTREST**

| NO. | PART NO.     | DESCRIPTION            | QTY | NOTES                                      | Season    | Vehicle Color | OLD CODE     |
|-----|--------------|------------------------|-----|--|-----------|---------------|--------------|
| 1   | 65401B50T000 | FOOTREST WHITE         | 1   | for black B2 vehices                       | 2007-2009 | B2            |              |
| 1   | 65401B50T001 | FOOTREST ECRU          | 1   | for all the colors except black B2         | 2007-2009 | T7;Y1;BH;W1;  |              |
| 1   | 65401B130020 | FOOTREST WHITE BLACK   | 1   | for blue LO & pink TV vehicles 2009version | 2009      | LO; TV        |              |
| 2   | 65406B50T000 | COVER, LOWER           | 1   |  | 2007-2009 |               |              |
| 3   | 65411B50T000 | CAP, BATTERY WHITE     | 1   | only for black B2,BH vehicles              | 2007-2009 | B2;BH         |              |
| 3   | 65411B50T001 | CAP, BATTERY CHAMPAGNE | 1   | for all the colors except black B2 and BH  | 2007-2009 | T7;Y1;W1;     |              |
| 3   | 65411B130020 | CAP, BATTERY BLACK     | 1   | for blue LO & pink TV vehicles 2009version | 2009      | LO; TV        |              |
| 4   | 65801J0ET000 | NUT 4MM                | 4   |  | 2007-2009 |               |              |
| 5   | B13060601205 | SCREW W/WASHER 6X12MM  | 1   |  | 2007-2009 |               |              |
| 6   | 65811B50T000 | BATTERY DAMPER         | 1   |  | 2007-2009 |               |              |
| 7   | B05074201605 | SCREW ST4.2X16         | 4   |  | 2007-2009 |               | B05004201605 |
| 8   | B07020000505 | WASHER 5MM             | 2   |  | 2007-2009 |               |              |
| 9   | 65413B50T000 | CUSHION, FOOTREST      | 1   |  | 2007-2009 |               | 65413B50T001 |
| 10  | B13060602005 | SCREW W/WASHER 6X20MM  | 4   |  | 2007-2009 |               |              |



FRAME COVER

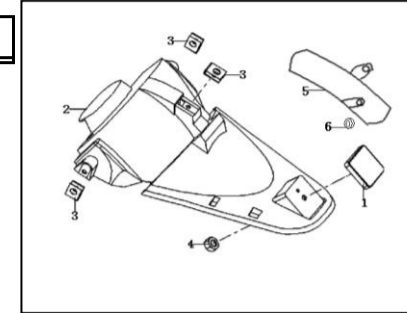
| NO. | PART NO.      | DESCRIPTION                   | QTY | NOTES  | Season    | Vehicle Color            | OLD CODE     |
|-----|---------------|-------------------------------|-----|--|-----------|--------------------------|--------------|
| 1   | 08002B50T001  | SCREW                         | 1   |  | 2007-2009 |                          |              |
| 2   | 08250B50T000  | PLATE, NUMBER                 | 1   |  | 2007-2009 |                          |              |
| 3   | 65601B50TT71  | SIDE COVER, LH SOLID PINK T7  | 1   | for SOLID PINK T7 vehicles                               | 2007-2008 | T7                       |              |
| 3   | 65601B50TY11  | SIDE COVER, LH CHAMPAGNE Y1   | 1   | for CHAMPAGNE Y1 vehicles                                | 2007-2008 | Y1                       |              |
| 3   | 65601B50TBH1  | SIDE COVER, LH BLACK BH       | 1   | for black BH vehicles                                    | 2007-2008 | BH                       |              |
| 3   | 65601B50TW11  | SIDE COVER, LH WHITE W1       | 1   | for white W1 vehicles                                    | 2007-2008 | W1                       | 65601B50TWD  |
| 3   | 65601B50TB21  | SIDE COVER, LH BALCK B2       | 1   | for black B2 vehicles                                    | 2008      | B2                       |              |
| 3   | 65601B50TLO1  | SIDE COVER, LH BLUE LO        | 1   | for EPA market blue LO vehicles                          | 2009      | LO                       | 65601B13LO00 |
| 3   | 65601B13DC01  | SIDE COVER, LH TV             | 1   | for EPA market pink TV vehicles                          | 2009      | TV                       | 65601B13DC00 |
| 4   | 65605B50T001  | COVER, FRONT ECRU             | 1   | for EPA customer   | 2007-2009 | T7;Y1;W1;<br>B2;LO;R5;TV |              |
| 4   | 65605B50TWG   | COVER, FRONT CREAM            | 1   | for EPA customer black BH vehicles                       | 2007-2009 | BH                       | 65605B50TWG  |
| 4   | 65605B50TTWG0 | COVER, FRONT WHITE WG         | 1   | for EEC and NON-EEC market black B2 vehicles             | 2007-2009 | B2                       | 65605B50T000 |
| 5   | 65606B50T000  | COVER, TAIL ECRU              | 1   | for all the colors except black BH and black B2 vehicles | 2007-2009 | T7;Y1;W1;<br>LO;R5;TV    |              |
| 5   | 65606B13WG0   | COVER, TAIL WHITE WG          | 1   | for black BH, B2 vehicles                                | 2007-2009 | B2;BH                    |              |
| 6   | 65602B50TT71  | SIDE COVER, RH SOLID PINK T7  | 1   | for SOLID PINK T7 vehicles                               | 2007-2009 | T7                       |              |
| 6   | 65602B50TY11  | SIDE COVER, RH CHAMPAGNE Y1   | 1   | for CHAMPAGNE Y1 vehicles                                | 2007-2009 | Y1                       |              |
| 6   | 65602B50TBH1  | SIDE COVER, RH BLACK BH       | 1   | for black BH vehicles                                    | 2007-2009 | BH                       |              |
| 6   | 65602B50TW11  | SIDE COVER, RH WHITE W1       | 1   | for white W1 vehicles                                    | 2007-2009 | W1                       | 65602B50TWD  |
| 6   | 65602B50TB21  | SIDE COVER, RH BALCK B2       | 1   | for black B2 vehicles                                    | 2008      | B2                       |              |
| 6   | 65602B50TLO1  | SIDE COVER, RH BLUE LO        | 1   | for EPA market blue LO vehicles                          | 2009      | LO                       | 65602B13LO00 |
| 6   | 65602B13DC01  | SIDE COVER, RH TV             | 1   | for EPA market pink TV vehicles                          | 2009      | TV                       | 65602B13DC00 |
| 7   | 65609B50TT70  | COVER, OIL TANK SOLID PINK T7 | 1   | for SOLID PINK T7 vehicles                               | 2007-2009 | T7                       |              |
| 7   | 65609B50TY10  | COVER, OIL TANK CHAMPAGNE Y1  | 1   | for CHAMPAGNE Y1 vehicles                                | 2007-2009 | Y1                       |              |
| 7   | 65609B50TBH0  | COVER, OIL TANK BLACK BH      | 1   | for black BH vehicles                                    | 2007-2009 | BH                       |              |
| 7   | 65609B50TW10  | COVER, OIL TANK WHITE W1      | 1   | for white W1 vehicles                                    | 2007-2009 | W1                       | 65609B50TWD  |
| 7   | 65609B50TB20  | COVER, OIL TANK BLACK B2      | 1   | for black B2 vehicles                                    | 2008      | B2                       |              |
| 7   | 65609B50TLO0  | COVER, OIL TANK BLUE LO       | 1   | for blue LO vehicles                                     | 2008      | LO                       |              |
| 7   | 65609B50TTV0  | COVER, OIL TANK PINK TV       | 1   | for pink TV vehicles                                     | 2008      | TV                       |              |
| 7   | 65609B13DC00  | COVER, OIL TANK TV            | 1   | for pink TV vehicles                                     | 2009      | TV                       |              |
| 8   | 05201B50T000  | DECORATION, SEAT LOCK         | 1   |  | 2007-2009 |                          |              |
| 9   | 65801J0ET000  | NUT 4MM                       | 8   |  | 2007-2009 |                          |              |
| 10  | B04070600055  | NUT 6MM                       | 2   |  | 2007-2009 |                          |              |
| 11  | B05074201605  | SELF-TAPPING SCREW ST4.2X16   | 8   |  | 2007-2009 |                          | B05004201605 |
| 12  | B02000607025  | SCREW 6X70MM                  | 1   |  | 2007-2009 |                          |              |
| 13  | B07030000605  | WASHER 6MM                    | 1   |  | 2007-2009 |                          |              |
| 14  | B090303012A3  | PIN 2.8X12                    | 1   |  | 2007-2009 |                          | B090303012A4 |
| 15  | B13060601605  | SCREW W/WASHER 6X16MM         | 2   |  | 2007-2009 |                          |              |
| 16  | B05074801605  | SELF-TAPPINGSCREWST4.8X16     | 2   |  | 2007-2009 |                          | B05075001205 |
| 17  | B04070600055  | NUT 6MM                       | 2   |  | 2007-2009 |                          |              |
| 18  | 86400T180002  | SIDE REFLEX REFLECTOR         | 2   |  | 2007-2009 |                          | 86300B50T000 |
| 19  | B05003201005  | SCREW W/WASHER 3.2X9.5MM      | 2   |  | 2007-2009 |                          | B05074201305 |
| 20  | 05531B50T000  | EPA PASTER                    | 1   | for 2007 season  | 2007      |                          |              |
| 20  | 05531B130007  | EPA PASTER                    | 1   | for 2008 season  | 2008      |                          |              |
| 21  | B05074201305  | SELF-TAPPING SCREW ST4.2X13   | 1   |  | 2007-2009 |                          | #N/A         |





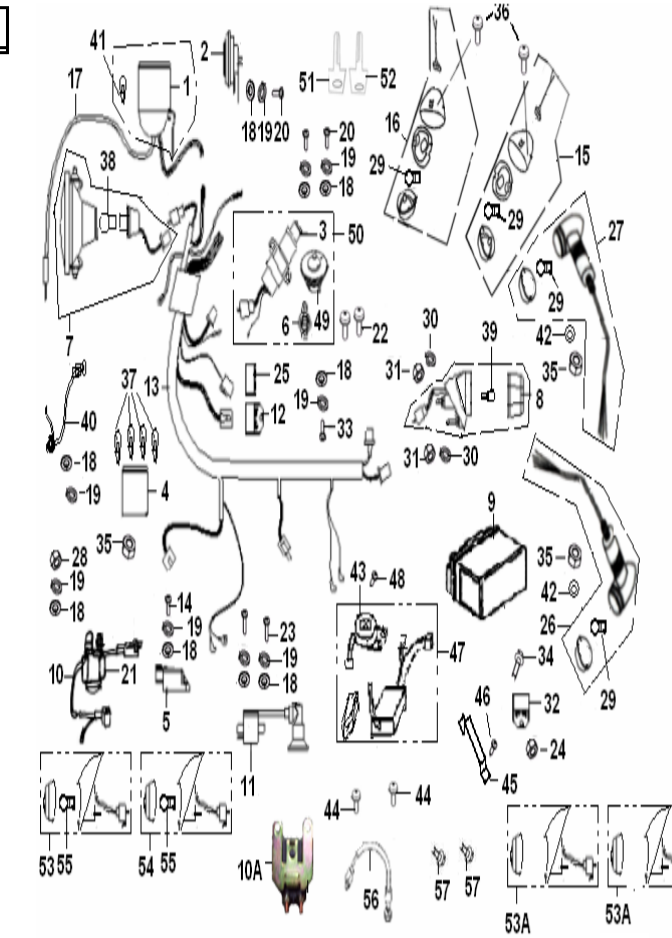
**F17 REAR FENDER**

| NO. | PART NO.     | DESCRIPTION          | QTY | NOTES        | Season    | Vehicle Color | OLD CODE     |
|-----|--------------|----------------------|-----|--------------|-----------|---------------|--------------|
| 1   | 86500J000003 | REAR REFLECTOR ASSY. | 1   | For EPA only | 2007-2009 |               | 86500B50T000 |
| 2   | 65701B50T000 | REAR FENDER          | 1   |              | 2007-2009 |               |              |
| 3   | 65801J0ET000 | NUT 4MM              | 3   |              | 2007-2009 |               |              |
| 4   | B04070500005 | NUT 5MM              | 1   |              | 2007-2009 |               |              |
| 5   | 65702B50T000 | TAIL,REAR FENDER     | 1   |              | 2007-2009 |               |              |
| 6   | 65711B50T000 | BUSH                 | 1   |              | 2007-2009 |               |              |



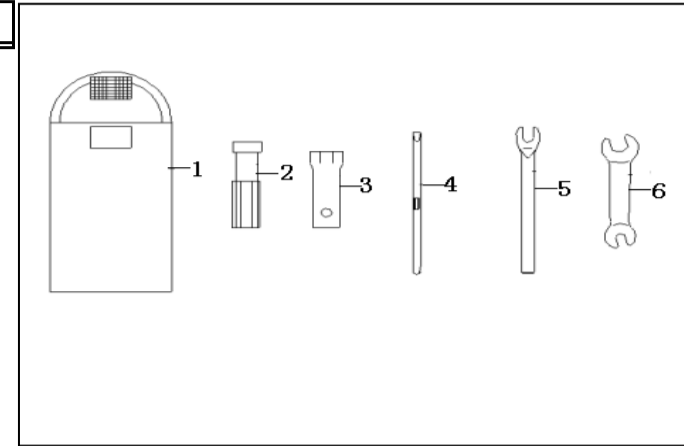
F18.1 ELECTRIC I for EPA and NON-EEC market

| NO. | PART NO.     | DESCRIPTION                  | QTY | NOTES   | Season    | Vehicle Color | OLD CODE     |
|-----|--------------|------------------------------|-----|---|-----------|---------------|--------------|
| 1   | 72000B50T001 | SPPEEDOMETER ASSY.           | 1   |   | 2007-2009 |               |              |
| 2   | 95000B50T000 | HORN                         | 1   |   | 2007-2009 |               |              |
| 3   | 88100B13000C | LOCK ASSY, POWER mark:on,off | 1   | only for EPA market   | 2009      |               |              |
| 4   | 77000B50T000 | INDICATOR COMP.              | 1   |   | 2007-2009 |               |              |
| 5   | 98801B50T000 | RECTIFIER                    | 1   |   | 2007-2009 |               |              |
| 6   | 88800B50T000 | LOCK ASSY, SEAT              | 1   |   | 2007-2009 |               |              |
| 7   | 80000B50T000 | HEAD LAMP ASSY               | 1   |   | 2007-2009 |               |              |
| 8   | 82000B50T001 | TAIL LAMP ASSY (DOT)         | 1   | for EPA market  | 2007-2009 |               |              |
| 9   | 96100B20T000 | BATTERY YT4L-BS              | 1   |   | 2007-2009 |               | 96100B50T001 |
| 10  | 94000B50T000 | RELAY, STARTER(old)          | 1   | used before 08.11.23  | 2007-2008 |               |              |
| 10A | 94100J000002 | RELAY, STARTER(new)          | 1   | New type, start VIN 69C901243. used after 08.11.23                | 2008-2009 |               | 94000B50T000 |
| 11  | 96200B50T000 | COIL ASSY                    | 1   |   | 2007-2009 |               |              |
| 12  | 96400B50T000 | FLASHER                      | 1   |   | 2007-2009 |               |              |
| 13  | 92000B50T006 | HARNES ASSY, WIRING          | 1   | for EPA before 08.11.23,VIN before 69C901243                      | 2007-2008 |               | 92000B50T000 |
| 13  | 92000B13000B | HARNES ASSY, WIRING          | 1   | for EPA ,used with new relay, start VIN 69C901243. after 08.11.23 | 2008-2009 |               | 92000B50T006 |
| 14  | B02000601625 | SCREW 6X16MM                 | 1   |   | 2007-2009 |               |              |
| 15  | 81100BM0T000 | LAMP, TURN SIGNAL, L(DOT)    | 1   | for EPA   | 2007-2009 |               |              |
| 16  | 81300BM0T000 | LAMP, TURN SIGNAL, R(DOT)    | 1   | for EPA   | 2007-2009 |               |              |
| 17  | 72900B50T000 | CABLE, SPEEDOMETER           | 1   |   | 2007-2009 |               |              |
| 18  | B07030000605 | WASHER 6MM                   | 9   |   | 2007-2009 |               |              |
| 19  | B07000000605 | WASHER 6MM                   | 9   |   | 2007-2009 |               |              |
| 20  | B02000601625 | SCREW 6X16MM                 | 3   |   | 2007-2009 |               |              |
| 21  | 94008B50T000 | COVER , RELAY, STARTER       | 1   |   | 2007-2009 |               |              |
| 22  | B13060601605 | SCREW W/WASHER 6X16MM        | 2   |   | 2007-2009 |               |              |
| 23  | B02000602025 | SCREW 6X20MM                 | 2   |   | 2007-2009 |               |              |
| 24  | B04070600055 | NUT 6MM                      | 1   |   | 2007-2009 |               |              |
| 25  | 96401B50T000 | COVER, FLASHER               | 1   |   | 2007-2009 |               |              |
| 26  | 81500B50T000 | FLASHER LIGHT, L (DOT)       | 1   |   | 2007-2009 |               |              |
| 27  | 81700B50T000 | FLASHER LIGHT, R (DOT)       | 1   |   | 2007-2009 |               |              |
| 28  | B04000600045 | NUT 6MM                      | 1   |   | 2007-2009 |               |              |
| 29  | 81004BM0T000 | BULB, 12V/10W                | 4   | for EPA   | 2007-2009 |               |              |
| 30  | B07020000505 | WASHER 5MM                   | 2   |   | 2007-2009 |               |              |
| 31  | B04000500045 | NUT 5MM                      | 2   |   | 2007-2009 |               |              |
| 32  | 97701B50T000 | C.D.I.                       | 1   |   | 2007-2009 |               |              |
| 33  | B02000601625 | SCREW 6X12MM                 | 1   |   | 2007-2009 |               |              |
| 34  | B01090602065 | BOLT 6X20MM                  | 1   |   | 2007-2009 |               |              |
| 35  | B04000600045 | NUT 6MM                      | 2   |   | 2007-2009 |               |              |
| 36  | B13140501405 | SCREW W/WASHER M5x14         | 2   | for EPA   | 2007-2009 |               |              |
| 37  | 70002B50T000 | BULB, 12V2W                  | 4   |   | 2007-2009 |               |              |
| 38  | 80002B50T000 | BULB, 12V/35/35W             | 1   |   | 2007-2009 |               |              |
| 39  | 82005B50T000 | BULB, 12V/21W/5W             | 1   |   | 2007-2009 |               |              |
| 40  | 96900B50T000 | WIRE, EARTH                  | 1   |   | 2007-2009 |               |              |
| 41  | 70001B50T000 | BULB, 12V1.7W                | 1   |   | 2007-2009 |               |              |
| 42  | B07020000604 | WASHER 6MM                   | 2   |   | 2007-2009 |               |              |
| 43  | 95730B50T000 | ALARM SYSTEM HORN            | 1   |   | 2007-2009 |               |              |
| 44  | B13010601605 | SCREW W/WASHER M6x16         | 2   |   | 2007-2009 |               |              |
| 45  | 95701JCCT000 | BAKT ALARMSYSTEM             | 1   |   | 2007-2009 |               |              |
| 46  | B01090601265 | SCREW 6X12MM                 | 2   |   | 2007-2009 |               | B0109061265  |
| 47  | 95700B50T000 | ANNUNCIATOR,VOICE ASSY.      | 1   |   | 2007-2009 |               |              |
| 48  | B05074001205 | SELF-TAPPING SCREW 4X12      | 1   |   | 2007-2009 |               |              |
| 49  | 50200B50T000 | CAP, FUEL TANK               | 1   |   | 2007-2009 |               |              |
| 50  | 88000B50T000 | LOCK ASSY.COMP.              | 1   |   | 2007-2009 |               |              |
| 50  | 88000B13000C | LOCK ASSY.COMP.mark:on,off   | 1   |   | 2009      |               |              |
| 51  | 88900B13000X | KEY NUT left                 | 1   |   | 2007-2009 |               |              |
| 52  | 88900B13001X | KEY NUT RIGHT                | 1   |   | 2007-2009 |               |              |
| 53A | 83000B130000 | LAMP, TURN SIGNAL            | 2   | for EPA market  | 2007-2009 |               |              |
| 54  | 81300B50T000 | LAMP, TURN SIGNAL, R         | 1   | for NON-EEC market  | 2007-2009 |               |              |
| 55  | 81004B50T000 | BULB, 12V/10W                | 4   | for NON-EEC market  | 2007-2009 |               |              |
| 56  | 92200G120000 | ELECTRIC CABLE               | 1   | used with new relay,start VIN 69C901243. used after 08.11.23      | 2008-2009 |               |              |
| 57  | B01090601065 | BOLT M6x10                   | 2   | used with new relay,start VIN 69C901243. used after 08.11.23      | 2008-2009 |               |              |



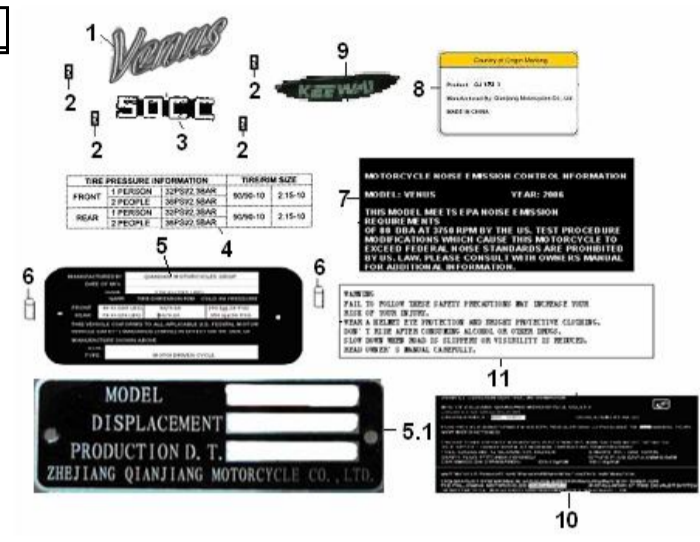
**F19 TOOL KIT**

| NO. | PART NO.     | DESCRIPTION          | QTY | NOTES | Season    | Vehicle Color | OLD CODE |
|-----|--------------|----------------------|-----|-------|-----------|---------------|----------|
| 1   | 02110B50T000 | BAG, TOOL KIT        | 1   |       | 2007-2009 |               |          |
| 2   | 02104B50T000 | HANDLE, SCREW DRIVER | 1   |       | 2007-2009 |               |          |
| 3   | 02101B50T000 | SOCKET, SPARK PLUG   | 1   |       | 2007-2009 |               |          |
| 4   | 02103B50T000 | DRIVER, DOUBLE-ENDED | 1   |       | 2007-2009 |               |          |
| 5   | 02108G0BP000 | WRENCH               | 1   |       | 2007-2009 |               |          |
| 6   | B200110-1200 | WRENCH, DOUBLE-ENDED | 1   |       | 2007-2009 |               |          |



**F20 STICKER**

| NO. | PART NO.     | DESCRIPTION                | QTY | NOTES            | Season    | Vehicle Color | OLD CODE     |
|-----|--------------|----------------------------|-----|------------------|-----------|---------------|--------------|
| 1   | 05511B50T000 | STICKER I, RR. SIDE COVER  | 2   |                  | 2007-2009 |               |              |
| 2   | 65311B50T000 | NIP NUT                    | 8   |                  | 2007-2009 |               |              |
| 3   | 05512B50T002 | STICKER II, RR. SIDE COVER | 2   |                  | 2007-2009 |               |              |
| 4   | 05533B50T000 | TIRE PRESSURE STICKER      | 1   |                  | 2007-2009 |               |              |
| 5   | 57001B50T004 | PLATE, LABEL               | 1   | for EPA          | 2008      |               |              |
| 5   | 57001B13000B | PLATE, LABEL               | 1   | EPA 2009 version | 2009      |               |              |
| 6   | B100432007P0 | RIVER 3.2X7                | 2   |                  | 2007-2009 |               | B10000300600 |
| 7   | 05536B50T000 | NOISE CONTROL 2            | 1   | for 2007 season  | 2007      |               |              |
| 7   | 05536B130002 | NOISE CONTROL 2            | 1   | for 2008 season  | 2008      |               |              |
| 8   | 05529B50T000 | MAKING PASTER              | 1   |                  | 2007-2009 |               |              |
| 9   | 05521B50T008 | STICKER FRONT COVER        | 1   |                  | 2007-2009 |               |              |
| 10  | 05568B130009 | LET STICKER                | 1   | EPA 2009 version | 2009      |               |              |
| 11  | 05535B50T000 | WARNING STICKER            | 1   |                  | 2007-2009 |               |              |



**F21 BACK BOX**

| NO. | PART NO.     | DESCRIPTION                 | QTY | NOTES                      | Season    | Vehicle Color | OLD CODE    |
|-----|--------------|-----------------------------|-----|----------------------------|-----------|---------------|-------------|
| 1   | 52210B50TT70 | BACK BOX ASSY SOLID PINK T7 | 1   | for SOLID PINK T7 vehicles | 2007-2009 | T7            |             |
| 1   | 52210B50TY10 | BACK BOX ASSY CHAMPAGNE Y1  | 1   | for CHAMPAGNE Y1 vehicles  | 2007-2009 | Y1            |             |
| 1   | 52210B50TBH0 | BACK BOX ASSY BLACK BH      | 1   | for black BH vehicles      | 2007-2009 | BH            |             |
| 1   | 52210B50TW10 | BACK BOX ASSY WHITE W1      | 1   | for white W1 vehicles      | 2007-2009 | W1            | 52210B50TWD |
| 1   | 52210B50TB20 | BACK BOX ASSY BLACK B2      | 1   | for black B2 vehicles      | 2008-2009 | B2            |             |
| 1   | 52210B50TLO0 | BACK BOX ASSY BLUE LO       | 1   | for blue LO vehicles       | 2008      | LO            |             |
| 1   | 52210B50TTV0 | BACK BOX ASSY PINK TV       | 1   | for pink TV vehicles       | 2008-2009 | TV            |             |
| 2   | 52181B50T000 | FIX BOARD                   | 2   |                            | 2007-2009 |               |             |
| 3   | B01010604023 | SCREW M6x40                 | 4   |                            | 2007-2009 |               |             |
| 4   | B07020000603 | WASHER 6                    | 8   |                            | 2007-2009 |               |             |
| 5   | B04000600053 | NUT M6                      | 4   |                            | 2007-2009 |               |             |
| 6   | B07000000603 | WASHER 6                    | 4   |                            | 2007-2009 |               |             |
| 7   | 05591B50T001 | STICKER                     | 1   |                            | 2007-2009 |               |             |
| 8   | 88600B50T000 | BACK BOX LOCK               | 1   |                            | 2007-2009 |               |             |



F22 ENGINE ATTACHMENT

| NO. | PART NO.     | DESCRIPTION        | QTY | NOTES | Season    | Vehicle Color | OLD CODE |
|-----|--------------|--------------------|-----|-------|-----------|---------------|----------|
| 1   | 08350B50T001 | KICK STARTER ASSY. | 1   |       | 2007-2009 |               |          |
| 2   | B01020602565 | BOLT 6X25MM        | 1   |       | 2007-2009 |               |          |

