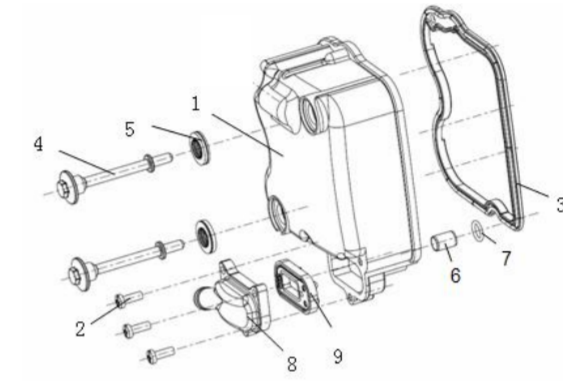


QJ153MI-2 JCK (Q16-00) -QJ125T-30 (欧III) -1A (1020911.00109)  
 QJ153MI-2 JCK (Q16-00) -QJ125T-30 (欧III) -1A (C2316001CS00)  
 JCK (Q16-55) -QJ150T-10 (非欧规) -1A  
 JCK (Q16-00) -QJ125T-30 (非欧规) -1A  
 JCK (Q16-00) -QJ150T-10 (非欧规) -1A  
 S.P. CATALOG FOR KEEWAY OUTLOOK 125/150, 2007-2008 VER.  
 ENGINE MODEL: KW153MI-2  
 MARKET APPLICABLE: EEC3; NON-EEC

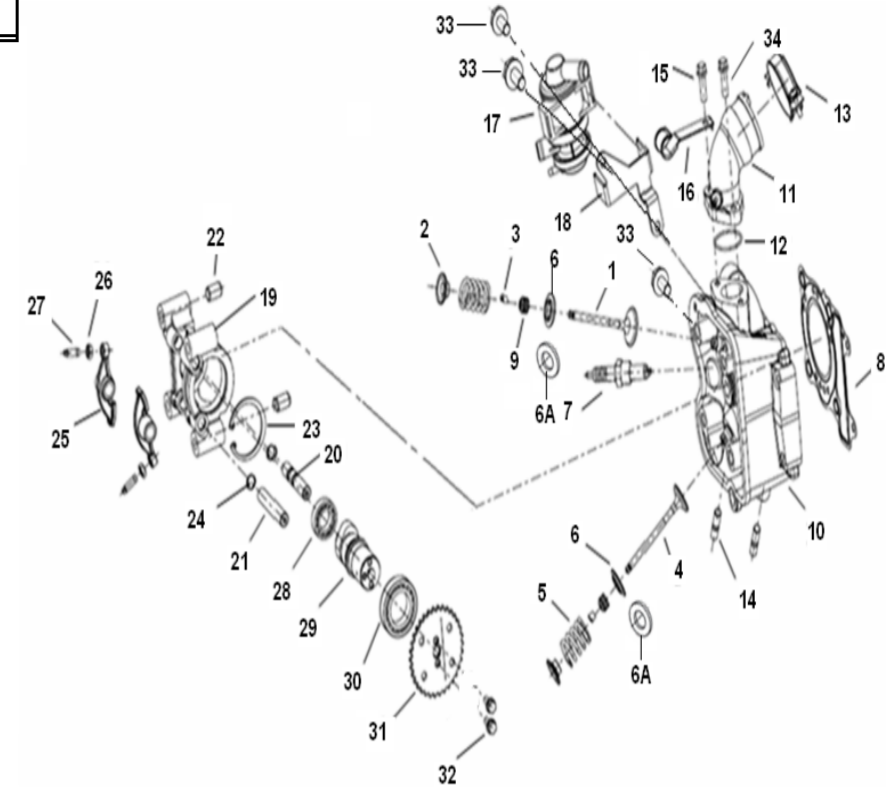
**E01 COVER CYLINDER HEAD ASSY**

NO.	CODE	DESCRIPTION	QTY.	NOTES	Market	OLD CODE
1	109013160000	COVER,CYLINDER HEAD	1	For EEC3&EPA market	EEC3&EPA	
2	B02040501464	SCREW (M5X14)	3	For EEC3 market	EEC3	
3	109023160000	GASKET,CYLINDER HEAD COVER	1			
4	100013160000	BOLT,FLANGE	2			
5	100025010000	WASHER,RUBBER	2			
6	150083080000	PINA,DOWEL(10X8.6X14)	1			
7	100053080000	O-RING(10X20)	1			
8	100053160000	COVER,REED VALVE	1	only for EEC3&EPA market	EEC3&EPA	
9	119043080000	REED VALVE COMPONENT	1	only for EEC3&EPA market	EEC3&EPA	



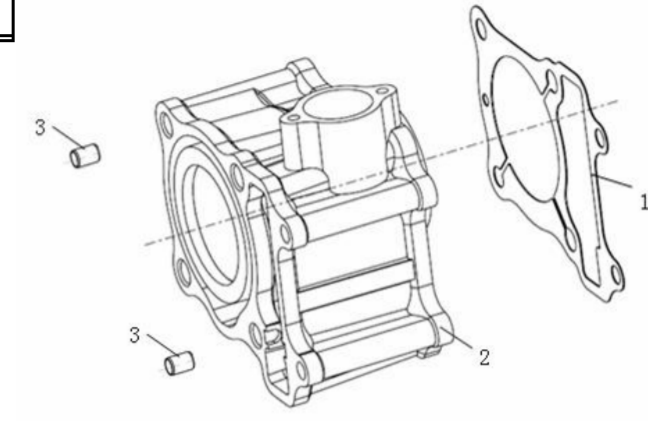
E02 COVER CYLINDER ASSY

NO.	CODE	DESCRIPTION	QTY.	NOTES	Market	OLD CODE
1	129184100000	VALVE,IN	1	for 150CC		
2	120013160000	RETAINER,VALESPRING	2			
3	129223230000	COTTER,VALVE	4			
4	129194100000	VALVE,EX	1	for 150CC		
5	129253160000	SPRING,VALVE	2			
6A	100133160000	WASHER,VALESPRING	2	start form Mar.2008 , used with new CYLINDER HEAD		
7	299073160000	SPARK PLUG	1			
8	109074100010	gasket,CYLINDER HEAD	1	for 150CC		
9	120013050010	SEAL,VALVE STEM (NOK)	2			
10	109054100002	CYLINDER HEAD (new)	1	start form Mar.2008, for 150cc EEC3 & EPA market, used with 100133160000	EEC3 & EPA	
11	110023160000	AIR DUCT	1			
12	B190102800A0	O-RING 28X1.8	1			
13	110023120000	BAND,INSULATOR	1			
14	100093160000	BOLT, STUD	2			
15	150011020000	lost-head nail M6X20	1			
16	100103160000	CLAMP,THERMOSTAT TUBE	1			
17	120063160000	VALVE ASSY,AIR INJECTION CONTROL	1	only for EEC3 & EPA market	EEC3 & EPA	
18	110013160000	STAY,AIR INJECTION CONTROL VALVE	1	only for EEC3 & EPA market	EEC3 & EPA	
19	129093160010	SEAT,CAMSHAFT	1			
20	129163160000	SHAFT,IN ROCKER ARM	1			
21	129173160000	SHAFT,EX. ROCKER ARM	1			
22	150083080000	PIN,DOWEL	2			
23	B080000042A1	CIRCLIP 42	1			
24	B080000010A1	CIRCLIP 10	2			
25	129133060000	ARM,VALVE ROCKER	2			
26	129243120000	NUT(M5X0.5)	2			
27	129233120000	SCREW	2			
28	B12016190202	BEARING 61902	1			
29	129073160000	CAMSHAFT	1			
30	B12016190501	BEARING 61905	1			
31	129033160000	SPROCKET	1			
32	B01030501263	BOLT(M5X12)	2			
33	B01070601664	BOLT M6X16	3			
34	B01070602064	BOLT M6X20	1			



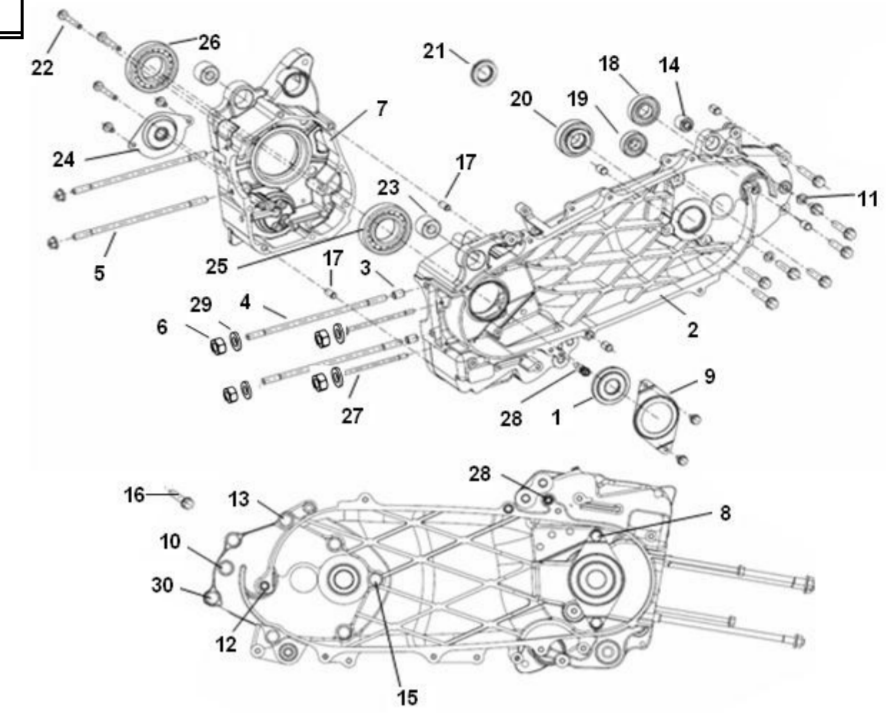
E03.2 CYLINDER\_FOR OUTLOOK 150CC

NO.	CODE	DESCRIPTION	QTY.	NOTES	Market	OLD CODE
1	139024100000	GASKER CYLINDER	1	for 150cc		
2	139014100000	CYLINDER	1	for 150cc		
3	150083080000	PIN,DOWEL	2			



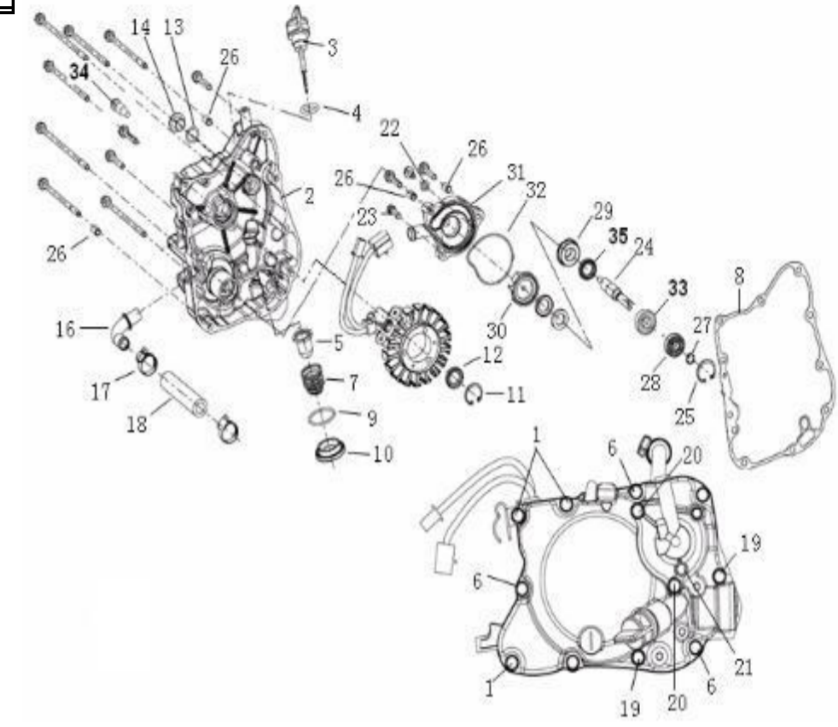
E04 CRANKCASE ASSY.

NO.	CODE	DESCRIPTION	QTY.	NOTES	Market	OLD CODE
2	159023160000	CRANKCASE,LEFT	1			
3	170063120000	PIN,DOWEL	2			
4	159103160000	GUIDE	2			
5	159113160000	GUIDE	2			
6	B04000800073	NUT(M8)	4			
7	159033160000	CRANKCASE,RIGHT	1			
8	B01070601264	BOLT(M6X12)	1			
9	150023160000	HUB,CLUTCHSLEEVE SEAL	1			
10	150022080000	BOLT(M8X16)	1			
11	210013120000	WASHER	2			
12	150083080000	PIN,DOWEL	4			
13	B01070804564	BOLT(M8X45)	4			
14	150093160000	BUSH,SHOCK ABSORBER	1			
15	B01070805064	BOLT(M8X50)	1			
16	B01070805563	BOLT(M8X55)	2			
17	150013060000	PIN,DOWEL	2			
18	B12016000402	BEARING 6004	1			
19	B12016020201	BEARING 6202	1			
20	B12016622202	BEARING 62/22D2/P6/C3	1			
22	B01070605064	BOLT(M6X50)	3			
23	150013120000	BUSH,ENGINE HANGER	2			
24	150043160000	HUB,CLUTCHSLEEVE OIL PUMP	1			
25	B12016020702	BEARING 6207	1			
26	170013060000	BEARING 72X35X15	1			
27	170013120000	BOLT(M6X100)	2			
28	150123160000	BOLT	1			
29	220152080000	WASHER	4			



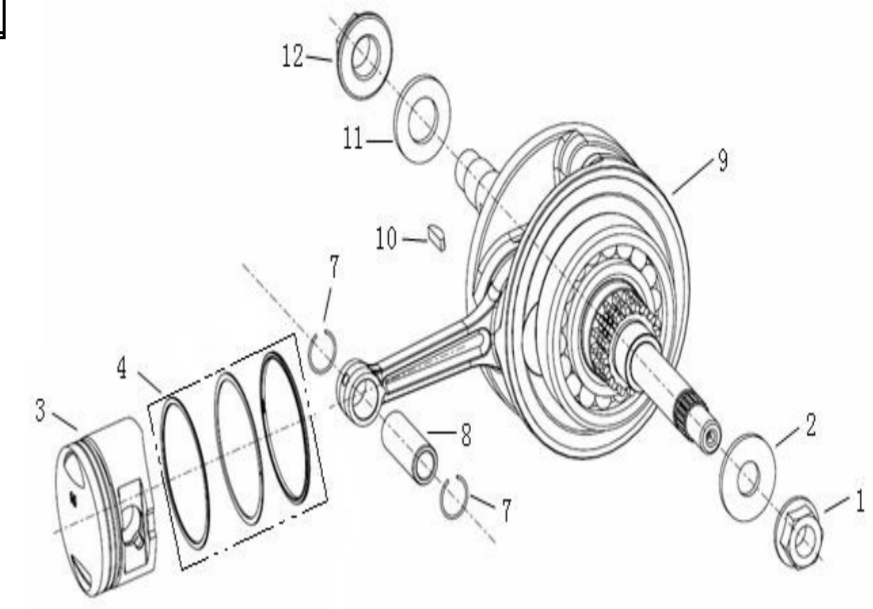
E05 COVERCASE RH ASSY

NO.	CODE	DESCRIPTION	QTY.	NOTES	Market	OLD CODE
1	B01070603564	BOLT(M6X35)	3			
2	169103160001	COVER,RIGHT(new type)	1	use for new type Water pump from May,2008. stop supplying. Used with B12016000101, B1212K121002.		
2	169093160002	COVER, RIGHT BLACK	1	black		
3	169183120001	DIPSTICK,OIL	1			
4	160063080000	O-RING(18X3.5)	1			
5	150093080000	SCREEN,OIL FILTER	1			
6	B01070611562	BOLT(M6X115)	5			
7	160013120000	SCREEN,OIL FILTER	1			
8	169113160000	PAD,COVER,R.CRANKCASE	1			
9	160023120000	O-RING	1			
10	160033120000	CAP,VALVE ADJ	1			
11	B080000024A1	CIRCLIP 24	1			
12	160022140010	油封 (NOK)	2			
13	150032080000	O-RING(14X2.65)	1			
14	160053080000	CAP	1			
16	279093160000	WATER OUTLET	1			
17	08060B450000	CLIP16-25	2			
18	270023160000	WATER OUTLET	1			
19	B01070613962	BOLT(M6X139)	2			
20	B01070603064	BOLT(M6X30)	2			
21	B01070601264	BOLT(M6X12)	1			
22	130013050000	WASHER	1			
23	B01070602064	BOLT(M6X20)	1			
24	279223160001	Water pump shaft (new type)	1	used from May 2008, can't provide now.		
25	B080000026A1	CIRCLIP 26	1			
26	160073080000	PIN,DOWEL	4			
28	B12016000101	BEARING 6001(new type)	1	use for new type Water pump from May,2008, can't provide now.		
29	160123160000	SEAL MECHANICAL	1			
30	279213160000	IMPELLER	1			
31	270053160000	COVER,WATER PUMP	1			
32	270033160000	SEAL RING,COVERWATER PUMP	1			
33	B1212K121002	NEEDLE BEARING HK12X16X10	1	use for new type Water pump from May,2008, can't provide now.		
34	150123160000	BOLT	1			
35	270153160000.000000	OIL SEAL 12X24X5	1	use for new type Water pump from May,2008, can't provide now.		



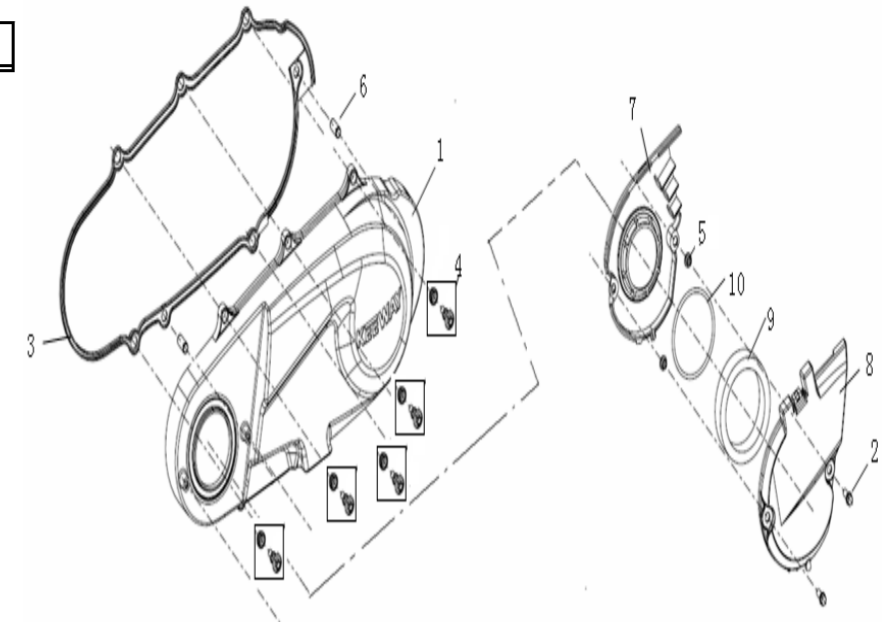
**E06 CRANKSHAFT & CONNECTING ROD & PISTON ASSY**

NO.	CODE	DESCRIPTION	QTY.	NOTES	Market	OLD CODE
1	170033120000	NUT (M12X1.25)	1			
2	250053120000	WASHER	1			B070300122P4
3	179134100000	PISTON	1	for 150cc		
4	17918410001Z	PISTON ASSY	1 set	for 150CC, order by set		
7	179153090000	CIRCLIP	2			
8	179144100000	PIN,PISTON	1	for 150cc		
9	179013160010	CRANKSHAFT (bearing NTN)	1			179013160000
10	170023120000	KEY,WOODRUFF	1			
11	170014050000	WASHER	1			
12	170024050000	NUT	1			



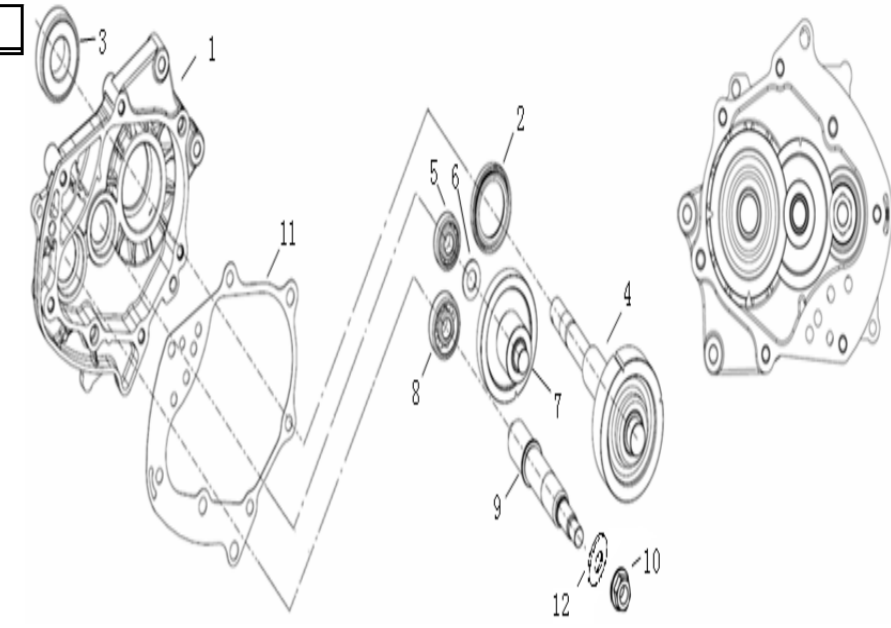
E07 COVERCASE LH ASSY

NO.	CODE	DESCRIPTION	QTY.	NOTES	Market	OLD CODE
1	16902316080X	LEFT CRANKCASE COVER SILVER	1	SIVLER		
1	169023160020	LEFT CRANKCASE COVER (BLACK)	1	BLACK		
2	B01070601664	BOLT(M6X16)	2			
3	160013160000	GASKET,L.COVER	1			
4	160083160010	BOLT,L.CRANKCASE COVER	5			
5	160073160000	BUSH	2			
6	160113160000	PIN,DOWEL	2			
7	160033160000	DUCT,BELT COVER	1			
8	160043160000	CAP,DUCT COVER	1			
9	160053160000	ELEMENT,BELTCOVER DUCT	1			
10	160063160000	O-RING(72X3.5)	1			



E08 TRANSMISSION ASSY.

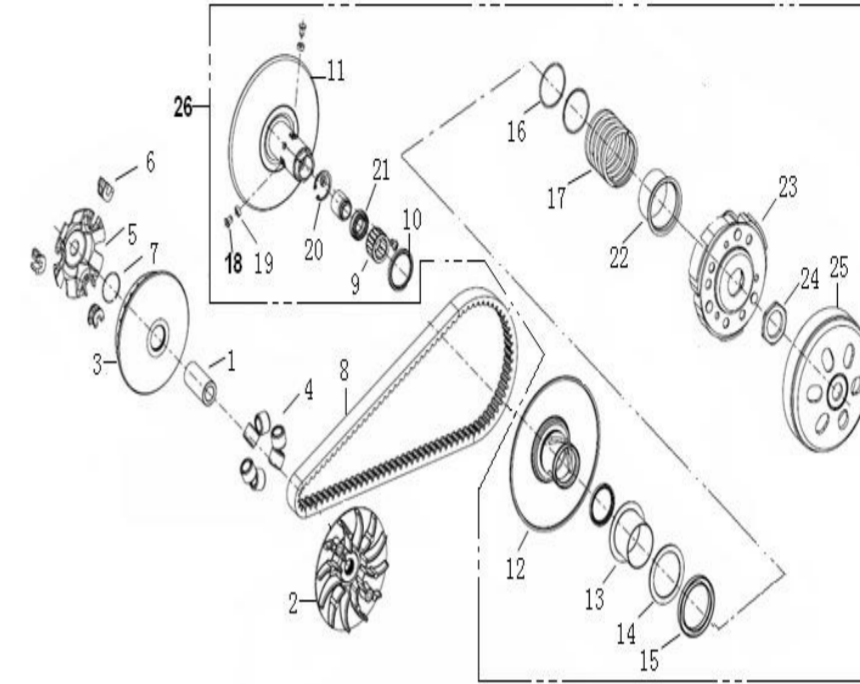
NO.	CODE	DESCRIPTION	QTY.	NOTES	Market	OLD CODE
1	229113160001	COVER,TRANSMISSION	1			
2	170054050010	OIL SEAL(35X52X7)(NOK)	1			
3	B12016020500	BEARING 6205-2RS	1			
4	220053160001	GEAR SHAFT ASSY	1			
5	B12016020102	BEARING 6201	1			
6	220033160000	WASHER(23X12.2X2)	1			
7	229064100000	COUNTERSHAFT	1	for 150CC		
8	B12016030102	BEARING 6301	1			
9	229044100000	DRIVE SHAFT	1	for 150CC		
10	170033120000	NUT(M12X1.25)	1			
11	220013160000	GASKET,TRANSMISSION COVER	1			
12	250053120000	WASHER	1			





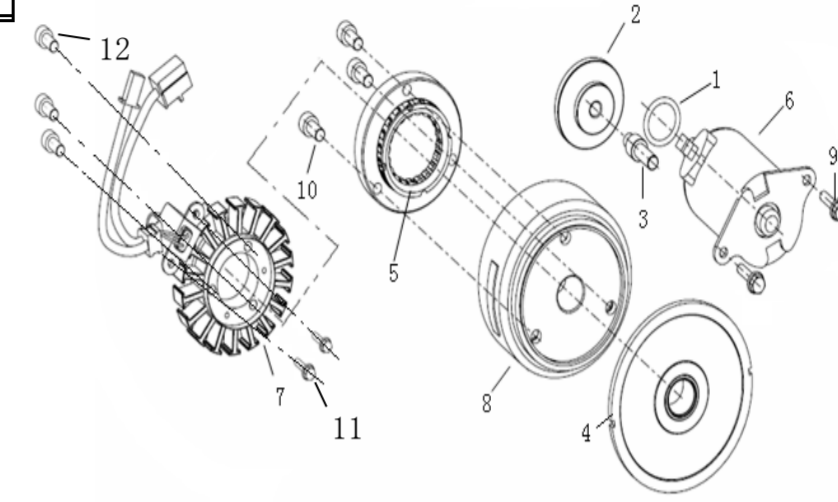
E09 CLUTCH ASSY.

NO.	CODE	DESCRIPTION	QTY.	NOTES	Market	OLD CODE
1	200023160000	BOSS B,DRIVE FACE	1			
2	200033160000	FACE,DRIVE	1			
3	200053160000	FACE,MOVABLE DRIVE	1			
4	200063160000	ROLLER,WEIGHT	1	6pcs/set		
5	200013060000	PLATE,RAMP	1			
6	200023060000	PIECE,SLIDE	3			
7	200013120000	CIRCLIP	1			
8	200013160000	BELT,DRIVE	1			
9	B1212K221801	BEARING	1			
10	200643120000	SEAL,DRIVEN FACE	2			
11	200133160000	FACE SET,DRIVEN	1			
12	200173160000	FACE SET,MOVABLE DRIVEN	1			
13	200093160000	COLLAR,SEAL	1			
14	200103160000	WASHER,COLLAR,SEAL	1			
15	200113160000	SEAT,DRIVEN SPRING	1			
16	200043120000	O-RING	2			
17	200053120000	SPRING,DRIVEN FACE	1			
18	200033120000	PIN,ROLLER GUIDE	3			
19	200023120000	ROLLER,GUIDE	3			
20	B080000028A1	CIRCLIP	1			
21	B12016190201	BEARING	1			
22	200123160000	COLLAR,SPRING	1			
23	200183160000	WEIGHT SET, CLUTCH	1			
24	200063120000	NUT,SPECIAL	1			
25	200093120000	CLUTCH OUTER	1			
26	209003160010	DRIVEN PULLY ASSY	1			



E10 STARTER ASSY.

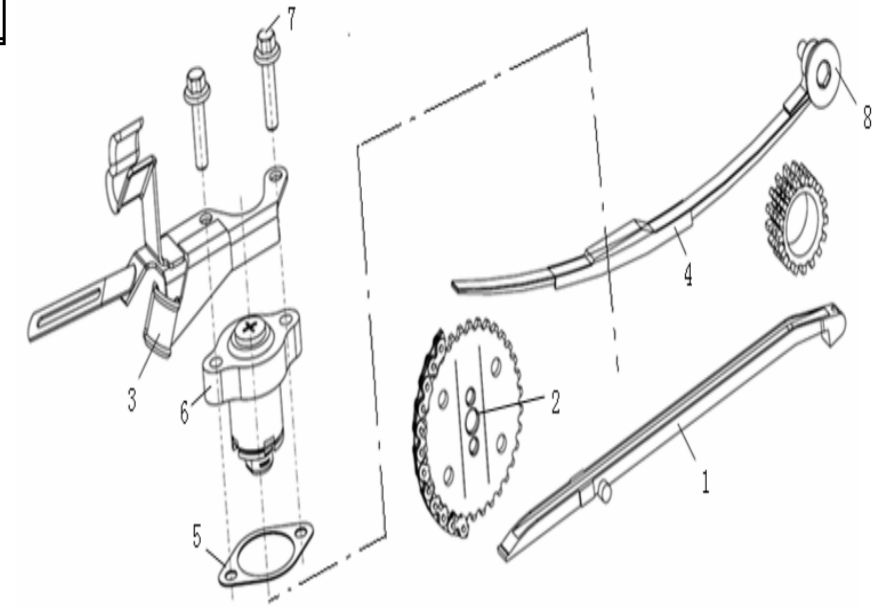
NO.	CODE	DESCRIPTION	QTY.	NOTES	Market	OLD CODE
1	24001306000	O-RING	1			
2	24904306000	GEAR,STARTER REDUCTION	1			
3	24905316000	SHAFT,STARTER REDUCTION	1			
4	24907316000	CLUTCH ASSY.	1			
5	24910505000	FLY WHEEL CLUTCH	1			
6	24004316000	STARTER MOTOR	1			
7	29903316000	STATOR	1			
8	29902316000	FLYWHEEL	1			
9	B01070601664	BOLT,SOCKET(M6X16)	2			
10	29001308000	BOLT,SOCKET(M8X18)	3			
11	B01070501264	BOLT,SOCKET(M5X12)	2			
12	B02050603064	BOLT,SOCKET(M6X30)	3			



B01070603064

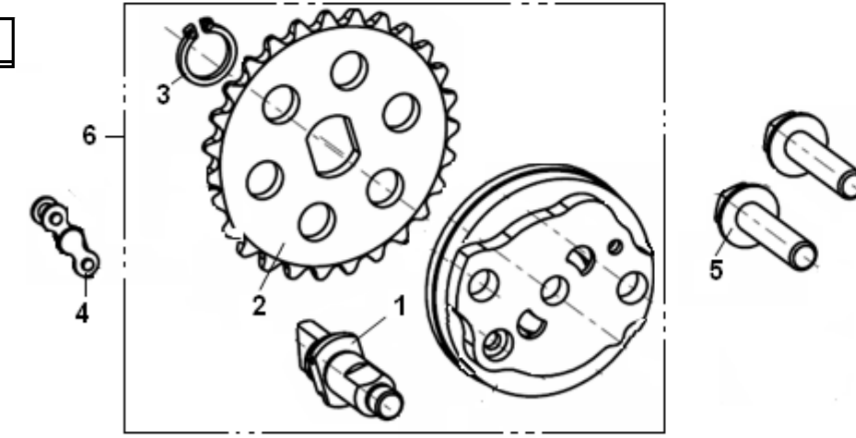
E11 CHAIN ASSY.

NO.	CODE	DESCRIPTION	QTY.	NOTES	Market	OLD CODE
1	149023120000	GUIDE,CAMCHAIN	1			
2	140013060000	CHAIN,CAM	1			
3	140013160000	CLAMP,HOSE	1			
4	149013160000	TENSIONER,CAMCHAIN	1			
5	140023120000	GASKET,CAM CHAIN ADJUSTER	1			
6	140043140000	BODY,ADJUSTER	1			
7	B01070602064	BOLT(M6X20)	1			
8	140043120000	BOLT	1			



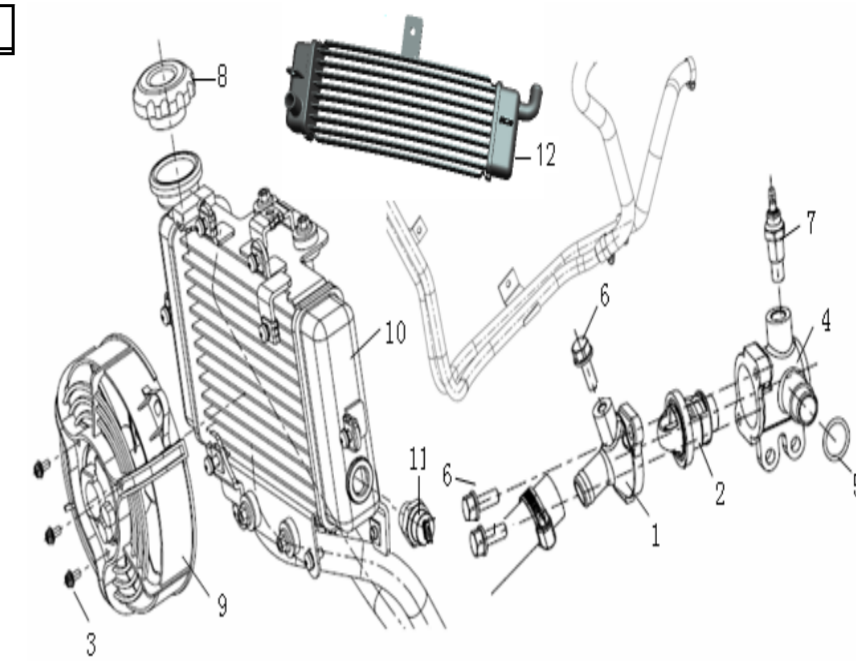
E12 FUEL PUMP ASSY.

NO.	CODE	DESCRIPTION	QTY.	NOTES	Market	OLD CODE
1	260033060000	SHAFT,OIL PUMP	1			
2	260013160000	SPROCKET,OIL PUMP	1			
3	B080100010A1	CIRCLIP 10	1			
4	269053160000	CHAIN,OIL PUMP	1			
5	B01070602563	BOLT(M6X25)	2			
6	269013160000	OIL PUMP,ASSY	1			



**E13 COOLING SYSTEM**

NO.	CODE	DESCRIPTION	QTY.	NOTES	Market	OLD CODE
1	270073160000	CAP,THERMOSTAT	1			
2	270135050000	THERMOSTAT	1			
3	B13130401002	BOLT(M4X10)	3			
4	270083160000	BODY,THERMOSTAT	1			
5	270093160000	O-RING(14.8X1.9)	2			
6	B01070601664	BOLT(M6X16)	3			
7	27001316000A	THERMOSTAT,without A mark	1	for the vehicle with single radiator		
7	270013160001	THERMOSTAT,mark A	1	for the vehicle with single and double radiator		
8	279181170000	CAP,RADIATOR FILER	1			
9	279023160000	FAN ASSEMBLY	1			
10	279123160000	RADIATOR	1	for all market except Italy	ALL Ex Q16-17	
11	279113160000	SENSOR,WATER TEMPERATURE	1	for all market except Italy	ALL Ex Q16-17	
12	270233160010	RADIATOR,ASSISTANT (black)	1	black, for vehicle with Double RADIATOR (normal)		



**E14 CARBURETOR**

NO.	CODE	DESCRIPTION	QTY.	NOTES	Market	OLD CODE
1	3390012M0010	carburetor	1	only for EPA	EPA	
2	3322211M0000	VALVE ASSY PISTON	1			
3	3324214M0000	NEEDLE JET	1			
4	3361001K0000	THERMO ASSY(waterproof)	1			
5	3311514M0000	MAIN JET 180#	1			
6	3340601K0000	PIN FLOAT	1			
7	3351401K0000	GASKET FLOAT CHAMBER	1			
8	3312401K0000	IDLE JET 37.5	1			
9	3340101K0000	FLOAT	1			
10	3342009M0000	VALVE NEEDLE	1			

