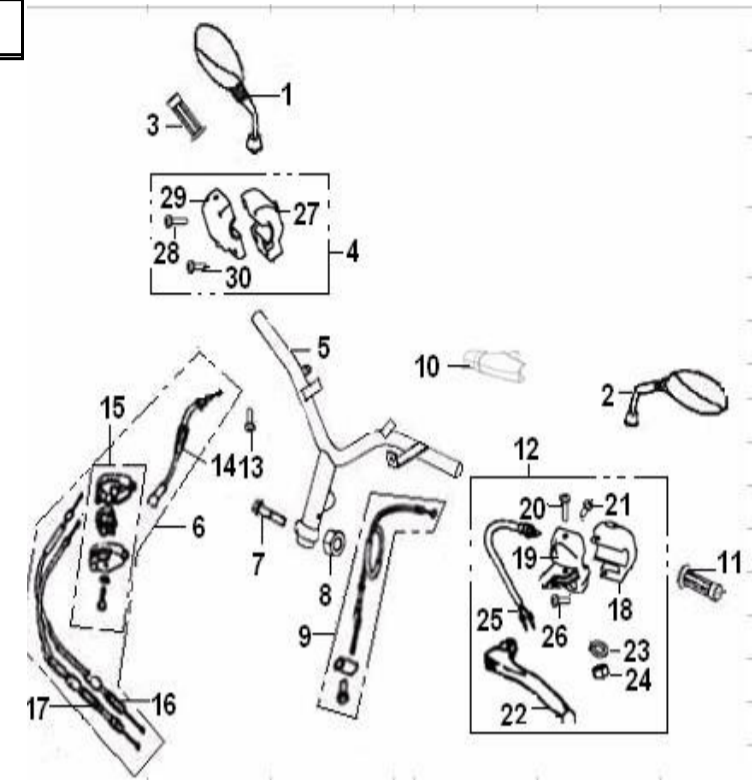


S.P. CATALOG FOR KEEWAY HURRICANE 50,2ST, 2007-2008 VER.



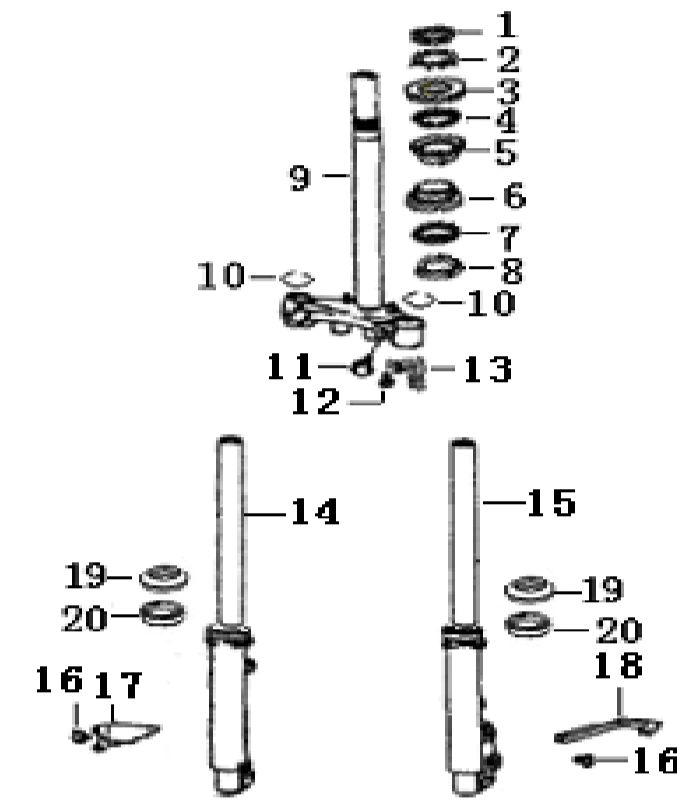
F01.1 CONTROL ASSY

| NO. | CODE | DESCRIPTION | QTY. | NOTES | SEASON | OLD NUMBERS |
|-----|--------------|----------------------------------|------|-----------------|--------|----------------------------|
| 1 | 40470BMBT000 | REAR VIEW MIRROR ASSY.RH.(BLACK) | 1 | for 2008 season | 2008 | |
| 2 | 40460BMBT000 | REAR VIEW MIRROR ASSY.LH.(BLACK) | 1 | for 2008 season | 2008 | |
| 3 | 40212J4AT000 | GRIP ASSY., THROTTLE | 1 | | | |
| 4 | 40600B910002 | RIGHT HANDLE SWITCH, RH. ASSY. | 1 | | | 40600BM0T00A, 40460BM0T002 |
| 5 | 40100B20TG81 | JOINTING ASSY., HANDLE BAR | 1 | | | |
| 6 | 40300B030004 | CABLE ASSY., THROTTLE (NEW) | 1 | | | 40300B20T001 |
| 7 | B01091004565 | BOLT M10X1.25X45 | 1 | | | |
| 8 | B04171012565 | NUT M10X1.25 | 1 | | | |
| 9 | 40270B20T001 | CABLE COMP.,REAR. BRAKE | 1 | | | |
| 10 | 40008BM0T000 | PROTECTOR,, REAR. BRAKE CABLE | 1 | | | |
| 11 | 40001J4AT000 | GRIP, LH. | 1 | | | |
| 12 | 40500BM0T000 | LEFT HANDLE SWITCH ,1 ASSY. | 1 | | | |
| 13 | B02000501025 | SCREW M5X10 | 1 | | | |
| 14 | 40330B030000 | CABLE THROTTLE | 1 | | | 40306B20T000 |
| 15 | 40340B030001 | JUNCTION BOX | 1 | | | 40340B20T001 |
| 16 | 40308B030000 | OIL PUMP LINE | 1 | | | 40308B20T000 |
| 17 | 40307B030000 | CARBURETOR LINE | 1 | | | 40307B20T001 |
| 18 | 40510BM0T000 | LEFT HANDLE SWITCH | 1 | | | |
| 19 | 40520BM0T000 | L. SWITCH FIXING SEAT | 1 | | | |
| 20 | B02000502525 | PAN HEAD SCREW 5X25 | 1 | | | |
| 21 | 40004BMAT000 | SCREW M5 | 1 | | | |
| 22 | 40002BM0T000 | LEFT LEVER | 1 | | | |
| 23 | B07000000505 | WASHER SPRING 5 | 1 | | | |
| 24 | B04000500065 | NUT M5 | 1 | | | |
| 25 | 91700BMAT000 | STOP SWITCH ASSY. | 1 | | | |
| 26 | B02000502025 | PAN HEAD SCREW M5X20 | 1 | | | |
| 27 | 40610B910002 | RIGHT HANDLE SWITCH, RH.(DOT) | 1 | | | 40610BM0T00A |
| 28 | B02000502525 | PAN HEAD SCREW M5X25 | 1 | | | |
| 29 | 40620BM0T000 | SWITCH FIXING R. | 1 | | | |
| 30 | B02000502025 | PAN HEAD SCREW M5X20 | 1 | | | |



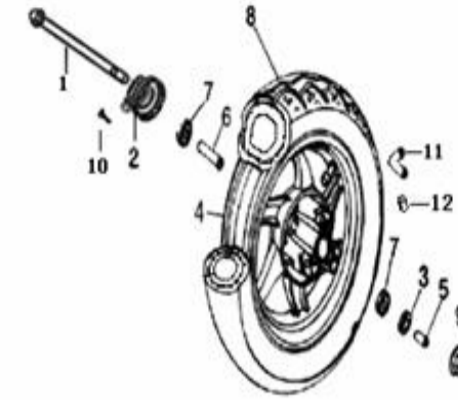
F02 FRONT FORK ASSY.

| NO. | CODE | DESCRIPTION | QTY. | NOTES | SEASON | OLD NUMBERS |
|-----|--------------|-------------------------------------|------|-------------------------|-----------|---------------------|
| 1 | 43008J0ET000 | PRESS NUT | 1 | | | |
| 2 | 43007B20T000 | WASHER | 1 | | | |
| 3 | 43001B20T000 | UPPER STEEL BOWL, UPPER BEARING | 1 | | | |
| 4 | B06010110000 | STEEL BALL Φ3.969 | 25 | | | |
| 5 | 43002B20T000 | LOWER STEEL BOWL, UPPER BEARING | 1 | | | |
| 6 | 43003B20T000 | UPPER STEEL BOWL, LOWER BEARING | 1 | | | |
| 7 | B06010140000 | STEEL BALL Φ4.763 | 21 | | | |
| 8 | 43004B20T000 | LOWER STEEL BOWL, LOWER BEARING | 1 | | | |
| 9 | 43100B20T001 | UNDER BRACKET COMP | 1 | | | |
| 10 | 43215BMAT000 | CLIP | 2 | | | |
| 11 | B01591003065 | FLANGE BOLT M10X1.25X30 | 2 | | | B01091003065 |
| 12 | B01090601265 | FLANGE BOLT M6X12 | 1 | | | B13170601264 |
| 13 | 43035BMBT000 | HOLDER, BRAKE HOSE 2 | 1 | | | |
| 14 | 43300B20T000 | R.H. FR. FORK ASSY.SILVER | 1 | used before 2008 season | 2006-2007 | |
| 14 | 43300B03HU00 | R.H. FR. FORK ASSY.SILVER(BLACK HU) | 1 | for 2008 season | 2008 | |
| 15 | 43200B20T000 | L.H. FR. FORK ASSY.SILVER | 1 | used before 2008 season | 2006-2007 | |
| 15 | 43200B03HU00 | L.H. FR. FORK ASSY.SILVER(BLACK HU) | 1 | for 2008 season | 2008 | |
| 16 | B01070601665 | BLOT M6X16 | 2 | | | B01070601605 |
| 17 | 43150BMAT000 | CABLE HOLDER | 1 | | | |
| 18 | 43021BM0T003 | BRAKE HOSE HOLDER, 1 | 1 | | | |
| 19 | 43290H00X000 | COVER,ANTI-DUST | 2 | | | |
| 20 | 43260H00X000 | OIL SEAL | 2 | | | |



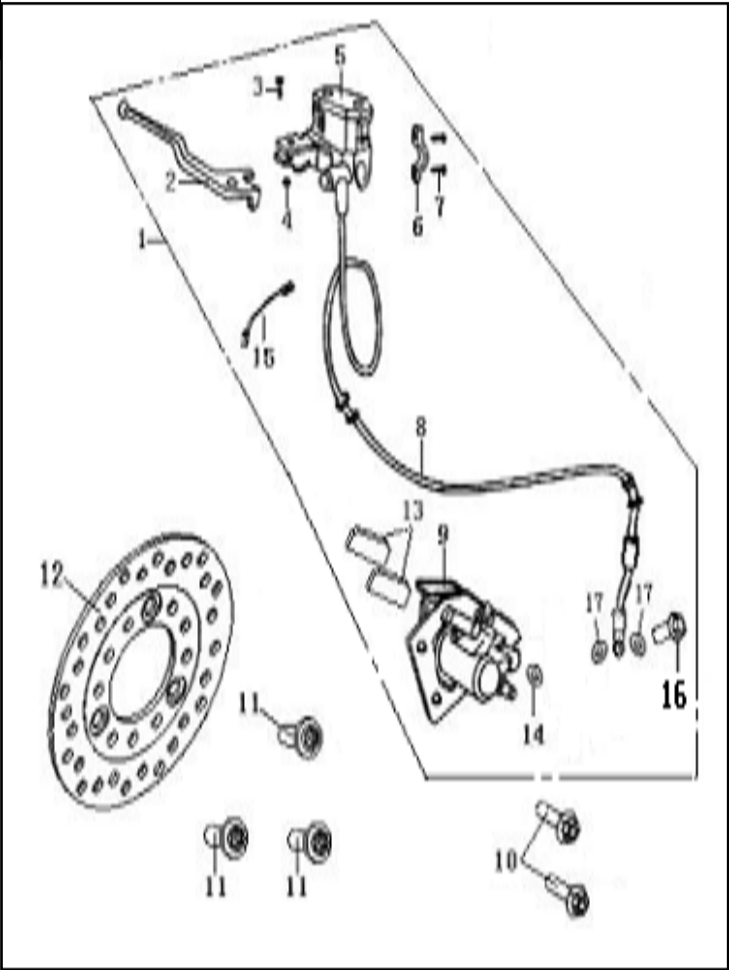
F03 FRONT WHEEL ASSY.

| NO. | CODE | DESCRIPTION | QTY. | NOTES | SEASON | OLD NUMBERS |
|-----|--------------|---|------|--------------|-----------|---------------------|
| 1 | 44005B20T001 | AXLE, FRONT WHEEL | 1 | | | |
| 2 | 44200B20TM91 | SEAT ASSY., GEAR WHEEL,(ORANGE M9) | 1 | | 2007 | |
| 2 | 44200B20TR81 | SEAT ASSY., GEAR WHEEL,(RED R8) | 1 | | 2007 | |
| 2 | 44200B20TBH1 | SEAT ASSY., GEAR WHEEL,(BLACK BH) | 1 | | 2007-2008 | |
| 2 | 44200B20TEN1 | SEAT ASSY., GEAR WHEEL,(BLUE EN) | 1 | | 2007 | |
| 3 | 44300B20T000 | OIL SEAL | 1 | | | |
| 4 | 44100B03BH00 | WHEEL HUB, FRONT, (BLACK BH)10" | 1 | | 2007 | 44200B20TBH1 |
| 4 | 44100B03M900 | WHEEL HUB, FRONT, (ORANGE M9)10" | 1 | | 2007 | 44200B20TM91 |
| 4 | 44100B03R800 | WHEEL HUB, FRONT, (RED R8)10" | 1 | | 2007 | 44200B20TR81 |
| 4 | 44100B03EN00 | WHEEL HUB, FRONT, (BLUE EN)10" | 1 | | 2007 | 44200B20TEN1 |
| 4 | 44100B03BH06 | WHEEL HUB, FRONT, (BLACK BH,fully painted),10", 2008 season | 1 | | 2008 | 44102B20TBH4 |
| 5 | 44004B20T000 | BUSHING RING | 1 | | | |
| 6 | 44006B20TT10 | SPACER, BEARING | 1 | | | |
| 7 | B12040100900 | BEARING 6200-2RS | 2 | | | |
| 8 | B140135010AA | TIRE 3.50-10 E11 75R-000197&DOT | 1 | SELL THROUGH | | B140135010AB |
| 9 | B04171012564 | NUT M10X1.25 | 1 | | | |
| 10 | B02020501624 | SCREW M5X16 | 1 | | | B02020501664 |
| 11 | B1403Z201110 | VALVE | 1 | | | B1403Z2011C0 |
| 12 | B1404Z2011C0 | CAP, VALVE | 1 | | | B140135010AB |



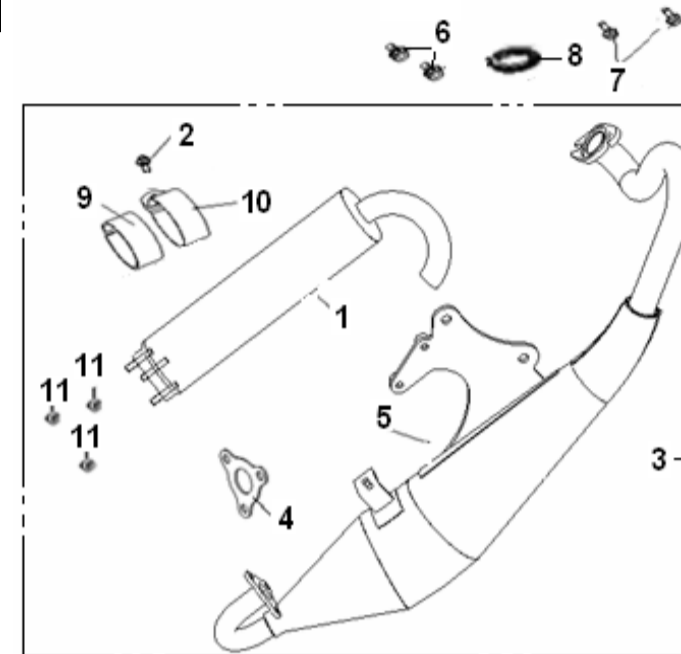
F04.2 DISC BRAKE ASSY. (without ABS System,For EPA market(North America) only) 10" rims

| NO. | CODE | DESCRIPTION | QTY. | NOTES | SEASON | OLD NUMBERS |
|-----|--------------|---|-------|------------------------|--------|---------------------|
| 1.1 | 4500B20T006 | DISK BRAKE ASSY.(matching vehicle with 10" wheels,without ABS, with Mark "DOT") | 1 | | | 45000B20T002 |
| 2 | 45022J3AT000 | DISC BRAKE LEVER | 1 | | | |
| 3 | 45024J1CT000 | LEVER MOUNTING SCREW 6MM | 1 | | | |
| 4 | B04160600065 | NUT 6MM | 1 | | | |
| 5 | 45400BMBTB30 | CYLINDER COMP.(BLACK) | 1 | | | |
| 6 | 45023J1DT000 | MASTER CYLINDER BRACKET | 1 | | | |
| 7 | B01070602365 | BOLT 6X23MM | 1 | | | |
| 8 | 45200B20T002 | BRAKE HOSE ASSY. (Mark "DOT") | 1 | | | 45200B20T001 |
| 9 | 45500B20T002 | CALIPER ASSY. (BLACK),(matching vehicle with 10" wheels) | 1 | | | |
| 10 | B01090803864 | BOLT 8X38MM | 2 | | | B01090803564 |
| 11 | 45036B20T000 | BOLT | 3 | | | |
| 12 | 45033B20T000 | BRAKE DISC | 1 | | | 45033BM0T000 |
| 13 | 45110B20T000 | BRAKE PAD KIT MARK : WTC JB (1 set 2pieces) | 1 set | order as per set only. | | |
| 14 | 45654B20T000 | WASHER | 2 | | | |
| 15 | 45300J3AT000 | STOP SWITCH ASSY. | 1 | 45651BMBT000 | | |
| 16 | 45037J000000 | FLANGE BOLT M10*1.25 | 1 | | | 45651BMBT000 |
| 17 | 45653B20T000 | WASHER | 2 | | | |



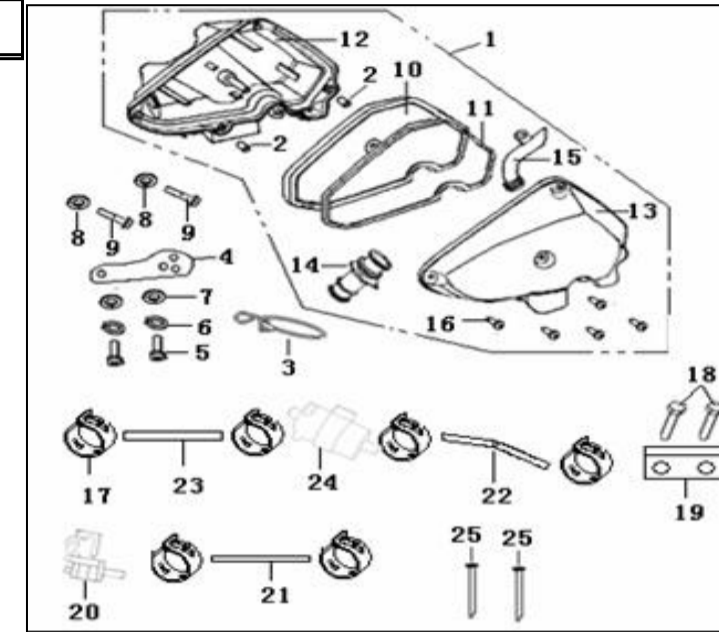
F05.2 SPORTY MUFFLER ASSY.(For EPA & NON-EEC market)

| NO. | CODE | DESCRIPTION | QTY. | NOTES | SEASON | OLD NUMBERS |
|-----|--------------|--------------------------------|------|-------|----------------------------|-------------|
| 1 | 48300BM0T000 | MUFFLER CANISTER ASSY. | 1 | | | |
| 2 | B01070601664 | BOLT 6x16MM | 1 | | | |
| 3 | 47100B03000E | MUFFLER ASSY.COMP | 1 | | 47100BM0T00G | |
| 4 | 47490BM0T005 | CUSHION | 1 | | 47490BM0T000 | |
| 5 | 47200B20T006 | MUFFLER ASSY. (with catalyzer) | 1 | | | |
| 6 | B0109060166L | BOLT 6x16MM | 2 | | B01070601665, B01090601665 | |
| 7 | B01090801665 | BOLT 8x16MM | 2 | | | |
| 8 | 47800B0DT000 | GASKET, EXHAUST PIPE | 1 | | 47800B2GT000 | |
| 9 | 47833B2GT005 | ADIABATIC RUBBER | 1 | | | |
| 10 | 48831B2GT005 | HOLDING CLAMP, MUFFLER | 1 | | | |
| 11 | 47006J0AP000 | NUT 6MM | 3 | | B04070600064 | |



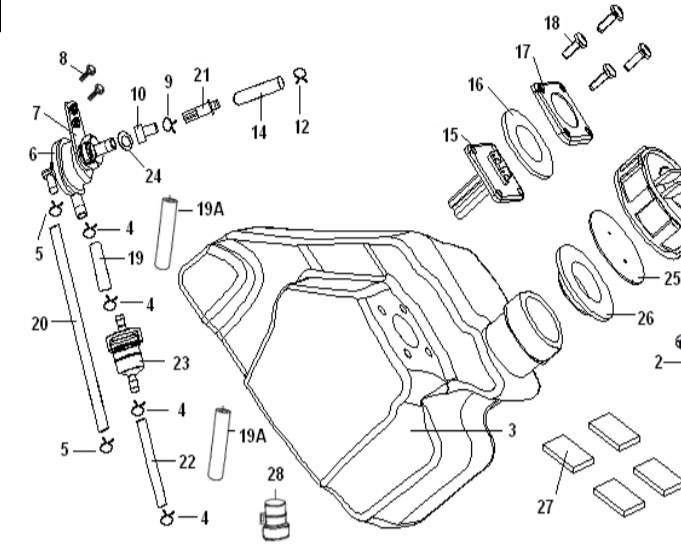
F06-AIR CLEANER ASSY.

| NO. | CODE | DESCRIPTION | QTY. | NOTES | SEASON | OLD NUMBERS |
|-----|--------------|-----------------------------|------|-------|--------|--------------|
| 1 | 49500B20T001 | AIR CLEANER MARK: e3 KWAF02 | 1 | | | |
| 2 | 49004B20T000 | BUSH | 2 | | | |
| 3 | 49350B20T000 | CLIP | 1 | | | |
| 4 | 49361B20T001 | PLATE | 1 | | | |
| 5 | B02000501665 | SCREW M5X16 | 2 | | | |
| 6 | B0700000505 | WASHER SPRING 5 | 2 | | | |
| 7 | B07030000505 | WASHER 5 | 2 | | | |
| 8 | B07020000605 | WASHER 6 | 2 | | | B07020000604 |
| 9 | B01190603065 | BOLT M6X30 | 2 | | | |
| 10 | 49202B20T000 | FILTER | 1 | | | |
| 11 | 49103B20T000 | SEAL LOOP | 1 | | | |
| 12 | 49101B20T000 | CASE, AIR CLEANER | 1 | | | |
| 13 | 49401B20T000 | CAP, AIR CLEANER | 1 | | | |
| 14 | 49005B20T000 | PIPE,AIR OUT | 1 | | | 49002B20T000 |
| 15 | 49002B20T000 | PIPE,AIR IN (φ16.5) | 1 | | | 49005B20T000 |
| 16 | B05074201905 | TAPPING SCREW ST4.2X19 | 5 | | | B05004201905 |
| 17 | 49805BMBT000 | SPRING II ,LOCK φ17.5 | 6 | | | |
| 18 | B01090601265 | SCREW 6X12MM | 2 | | | B13170601264 |
| 19 | 57051B2GT000 | PLATE ,ONE WAY VALVE | 1 | | | |
| 20 | 49840B0ES000 | ONE WAY VALVE II | 1 | | | |
| 21 | 49851B20T000 | HOSE φ17×φ9×570 | 1 | | | |
| 22 | 49852B2GT000 | HOSE φ18×φ13×240 | 1 | | | |
| 23 | 49853B2GT000 | HOSE II φ13×φ18x185 | 1 | | | |
| 24 | 49870B2GT000 | AIR CLEANER,SMALL | 1 | | | |
| 25 | 96001B20T000 | BAND 8x200 | 2 | | | |



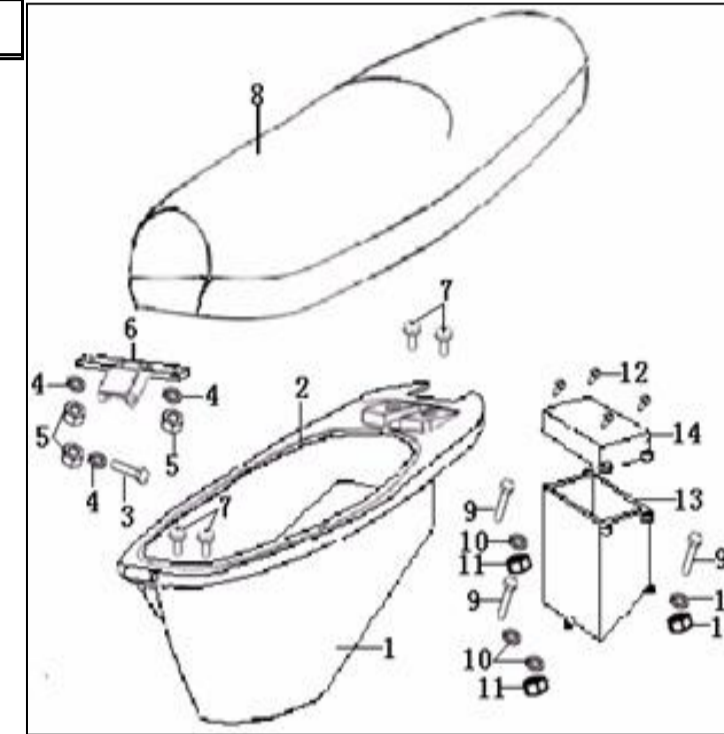
F07 FUEL TANK ASSY.

| NO. | CODE | DESCRIPTION | QTY. | NOTES | SEASON | OLD NUMBERS |
|-----|--------------|------------------------------------|------|--|--------------|-------------|
| 1 | 50201B0ET000 | LIP FUEL TANK--PLASTIC TANK | 1 | | | |
| 1 | 50201T160000 | LIP FUEL TANK--STEEL TANK | 1 | used for EPA vehicle with steel fuel tank | | |
| 2 | 50910B0ET000 | TIE ASSY. FUEL TANK | 1 | | | |
| 3 | 50100B0ETT10 | BODY, FUEL TANK--PLASTIC | 1 | | | |
| 3 | 50100B20T001 | BODY, FUEL TANK--STEEL | 1 | used for EPA vehicle with steel fuel tank | | |
| 4 | 50307BM0T000 | CLIPφ8 | 4 | | | |
| 4 | B17010090003 | CLIPφ9 | 4 | | | |
| 5 | 50306BM0T000 | CLIPφ7 | 2 | | | |
| 6 | 50300B0ET000 | Fuel cock | 1 | | | |
| 7 | 50313B20T000 | PLATE.FUEL COCK | 1 | | | |
| 8 | B02000501064 | SCREW M5x10 | 2 | | | |
| 9 | 50308B20T000 | CLIPφ16 | 1 | | | |
| 10 | 50311B20T000 | COUPLER.FUEL COCK | 4 | | | |
| 12 | 50309B20T000 | CLIPφ11 | 1 | | | |
| 14 | 50351B030001 | FILTER CASE | 1 | | 50301B20T000 | |
| 15 | 50800B0ETT10 | SENSOR ASSY--PLASTIC TANK | 1 | | | |
| 15 | 50800B020010 | SENSOR ASSY--STEEL TANK | 1 | used for EPA vehicle with steel fuel tank | | |
| 16 | 50004B0ETT10 | GLUE MAT | 1 | | | |
| 17 | 50003B0ETG80 | SENSOR BOARD | 1 | | | |
| 18 | B13140601405 | BOLT ASSY. M6X14 | 4 | | | |
| 19 | 50302B20T000 | HOSE IIφ4.5×φ8.5×60 | 1 | | | |
| 19A | 50303B470001 | HOSE IIIφ5×φ10×140 mark C-U-07-003 | 2 | | | |
| 20 | 50303B20T000 | HOSE IIIφ4×φ8×175 | 1 | | | |
| 21 | 50352B20T000 | FUEL FILTER | 1 | | | |
| 22 | 50304B20T000 | HOSE φ4.5×φ8.5×150 | 1 | | | |
| 23 | 50340J0ET000 | FILTER, FUEL | 1 | | | |
| 24 | 50312B0ET000 | RUBBER SEAL | 1 | | | |
| 25 | 50203B0ET000 | LIP OIL TANK PLASTIC CUSHION | 1 | | | |
| 26 | 50202B0ET000 | LIP OIL TANK SEAL | 1 | | | |
| 27 | 50920B0ET000 | CUSHION | 4 | | | |
| 28 | 50391J0ET000 | GASKET | 1 | | | |



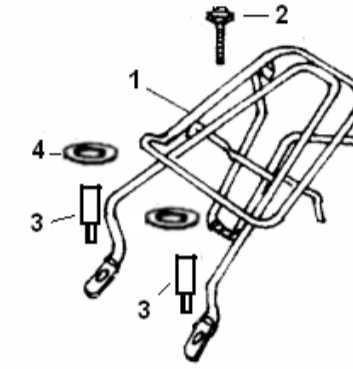
F08 SEAT ASSY.

| NO. | CODE | DESCRIPTION | QTY. | NOTES | SEASON | OLD NUMBERS |
|-----|--------------|-------------------------------|------|---|---------------------|--------------|
| 1 | 51004B20T000 | HELMET BOX | 1 | | | |
| 2 | 51012B20T000 | AIRPROOF.BAR | 1 | | | |
| 3 | 51001B20T000 | BOLT | 1 | | | |
| 4 | B07000000603 | WASHER SPRING \underline{g} | 3 | | | |
| 5 | B04000600053 | NUT M6 | 3 | | | |
| 6 | 51005B20T000 | MOUNTING PANEL ,SEAT | 1 | | | |
| 7 | B13060601664 | SCREW M6X16 | 4 | | | |
| 8 | 51100B20T004 | SEAT COMP.(KEEWAY) | 1 | | | |
| 9 | B01010501664 | BOLT M5X16 | 3 | | B01090501664 | |
| 10 | B07020000504 | WASHER 5 | 4 | | | |
| 11 | B04000500054 | NUT M5 | 3 | | | |
| 12 | B05072901605 | TAPPING SCREW ST2.9X16 | 4 | | B05002901605 | |
| 13 | 65816B20T000 | CASE.BATTERY | 1 | | | |
| 14 | 65813B20T001 | CAP.BATTERY | 1 | used for vehicle with YTX51 -RS battery | | 65813B20T000 |
| 14 | 65813B030003 | CASE.BATTERY | 1 | used for vehicle with YTX41 -RS battery | | 65813B20T001 |



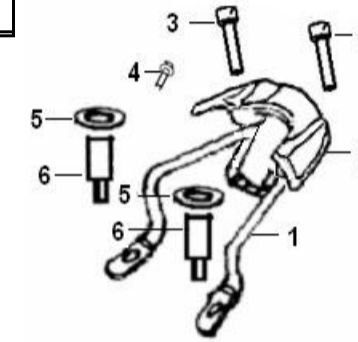
F09.1 CARRIER ASSY. (FOR NON-EEC, EEC2 MARKET)

| NO. | CODE | DESCRIPTION | QTY. | NOTES | SEASON | OLD NUMBERS |
|-----|--------------|-------------------|------|-------|--------|---------------------|
| 1 | 52011B20T000 | REAR CARRIER | 1 | | | |
| 2 | B01070601665 | BOLT M6X16 | 1 | | | B01070601605 |
| 3 | 51016B20T000 | SPECIAL SCREW | 2 | | | |
| 4 | 65822J00P000 | DECORATIVE, COVER | 2 | | 2009 | B01070601665 |



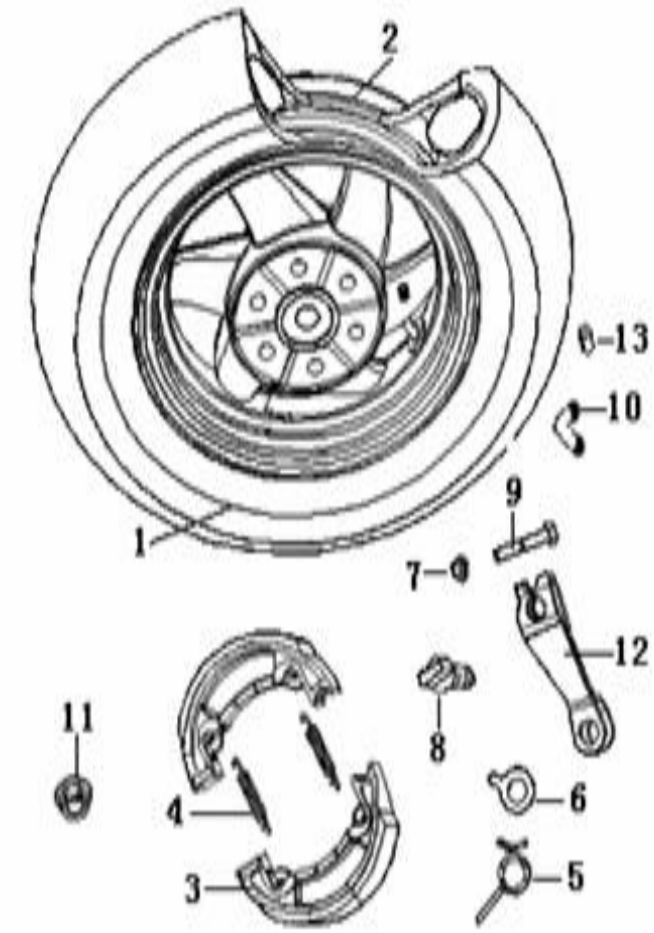
F09.2 CARRIER ASSY. (Aluminum Alloy)

| NO. | CODE | DESCRIPTION | QTY. | NOTES | SEASON | OLD NUMBERS |
|-----|--------------|------------------------------|------|-------|--------|---------------------|
| 1 | 52012B20T000 | RR.. CARRIER BRACKET | 1 | | | |
| 2 | 52011B20TD51 | RR..CARRIER ASSY (WATERMARK) | 2 | | | |
| 3 | B02050804564 | BOLT 8X45MM | 2 | | | 51014B20T000 |
| 4 | B01070601665 | BOLT 6X16MM | 1 | | | B01070601605 |
| 5 | 65822J00P000 | DECORATIVE,COVER | 2 | | | B01070601665 |
| 6 | 52016B2GT910 | SCREW M6X48 | 2 | | | |



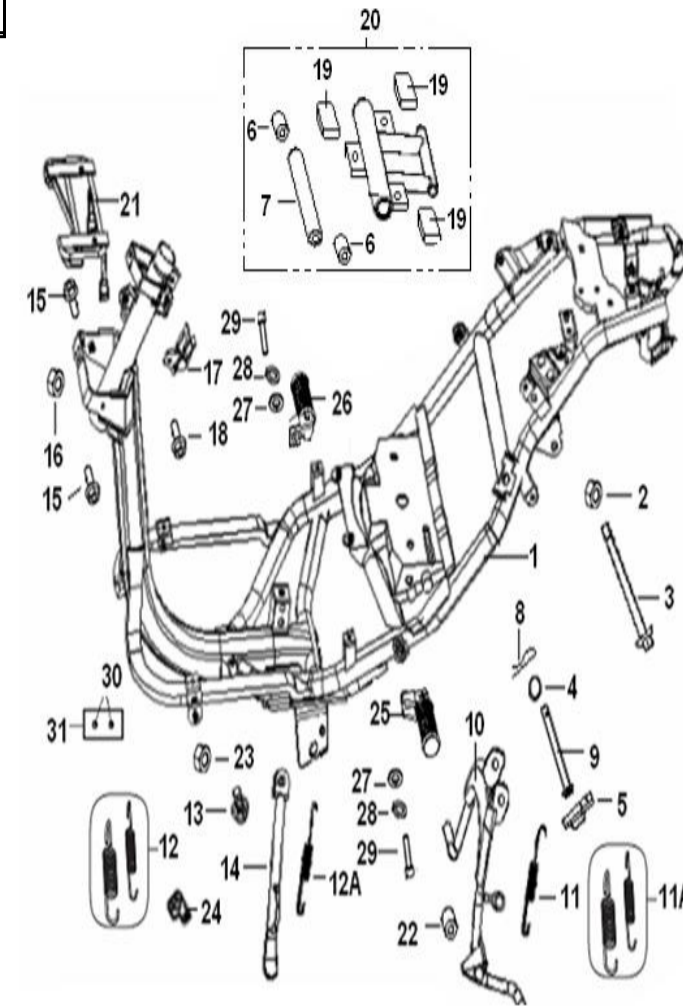
F10 REAR WHEEL ASSY.

| NO. | CODE | DESCRIPTION | QTY. | NOTES | SEASON | OLD NUMBERS |
|-----|--------------|--|-------|------------------|--------|---------------------|
| 1 | B140135010AA | TIRE 3.5-10 E11 75R-000197&DOT | 1 | | | B140135010AB |
| 2 | 54100B03M901 | RIM ASSY., REAR WHEEL (ORANGE M9) 10" | 1 | | 2007 | 54100B20TM91 |
| 2 | 54100B03R801 | RIM ASSY., REAR WHEEL (RED R8)10" | 1 | | 2007 | 54100B20TR81 |
| 2 | 54100B03BH01 | RIM ASSY., REAR WHEEL (BLACK BH)10" | 1 | | 2007 | 54100B20TBH1 |
| 2 | 54100B03EN01 | RIM ASSY., REAR WHEEL (BLUE EN)10" | 1 | | 2007 | 54100B20TEN1 |
| 2 | 54100B03BH06 | RIM ASSY., REAR WHEEL (BLACK BH,fully painted)10" Fully painted | 1 | | 2008 | 54100B20TBH1 |
| 3 | 54200B00T000 | SHOE ASSY., REAR BRAKE MARK:PJ ST5G3-00 (2pcs/set) | 1 set | order as per set | | |
| 4 | 54001B00T000 | SPRING, BRAKE SHOE | 2 | | | |
| 5 | 54008B0ET000 | RETURN SPRING | 1 | | | |
| 6 | 54002B00T000 | REAR INDICATOR | 1 | | | |
| 7 | B04170600064 | NUT M6 | 1 | | | |
| 8 | 54003B0ET000 | CAMSHAFT, REAR BRAKE | 1 | | | |
| 9 | B01010603024 | BOLT M6X30 | 1 | | | B01010603064 |
| 10 | B1403Z201110 | VALVE | 1 | | | B1403Z2011C0 |
| 11 | B04171415064 | NUT M14X1.5 | 1 | | | |
| 12 | 54007B0ET000 | ROCKER,REAR BREAK | 1 | | | |
| 13 | B1404Z2011C0 | CAP, VALVE | 1 | | | |



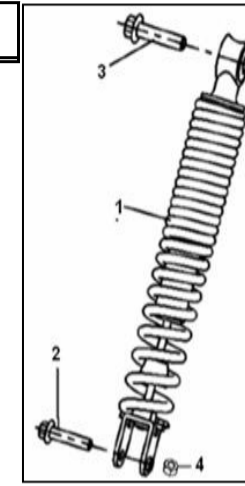
F11 FRAME ASSY.

| NO. | CODE | DESCRIPTION | QTY. | NOTES | SEASON | OLD NUMBERS |
|-----|--------------|---|------|-------|-----------|--------------|
| 1 | 57100B20TT13 | JOINTING ASSY., FRAME (for EPA(North America) market) | 1 | | | |
| 2 | B04171012564 | NUT M10X1.25 | 1 | | | |
| 3 | 58301B20T000 | AXLE,SUPPORT | 1 | | | |
| 4 | 58505B20T000 | PROTECTOR,MAIN STAND | 1 | | | |
| 5 | 58506B20T000 | CLIP,BRAKE CABLE | 1 | | | |
| 8 | B09003202823 | COTTER PIN | 1 | | | |
| 9 | 58501B450050 | SHAFT, MAIN STAND | 1 | | | 58501B410000 |
| 10 | 58520B030005 | MAIN STAND ASSY | 1 | | | 58520B030004 |
| 11 | 58502B20T000 | SPRING,MAIN STAND | 1 | | | |
| 12 | 57003B20TT10 | SPRING, SIDE STAND | 1 | | | 57010B20TT10 |
| 13 | 57005J0ET000 | BOLT M8x20 | 1 | | | 57005B20TT10 |
| 13 | 57005B410001 | BOLT M8x35.5 | 1 | | 2010 | |
| 14 | 58700B20TT11 | JOINTING ASSY., SINGLE STAND | 1 | | 2007-2009 | |
| 15 | B01090601664 | BOLT M6X16 | 2 | | | B01090602064 |
| 16 | B04070600064 | NUT M6 | 1 | | | B04070600054 |
| 17 | 57007B20T000 | POTHOOK, HELMET | 1 | | | |
| 18 | B01090601664 | BOLT M6X16 | 1 | | | B01090602064 |
| 19 | 58342B20T000 | DAMPER | 3 | | | |
| 20 | 58320BSAT000 | SUSPEND FRAME ASSY., ENGINE | 1 | | | 58300B20T000 |
| 21 | 58200B20TT11 | BRACKET ASSY., FRAME FRONT | 1 | | | |
| 22 | 58504B20T000 | RUBBER,MAIN STAND | 1 | | | |
| 25 | 58260J000035 | FOOTCAST, ASSY,LEFT | 1 | | | 58280B20T000 |
| 26 | 58280J000035 | FOOTCAST, ASSY,RIGHT | 1 | | | 58260B20T000 |
| 27 | B07030001004 | WASHER 10mm | 2 | | | |
| 28 | B07000001004 | WASHER SPRING 10mm | 2 | | | |
| 29 | B02051002264 | BOLT 10X22mm | 2 | | | |



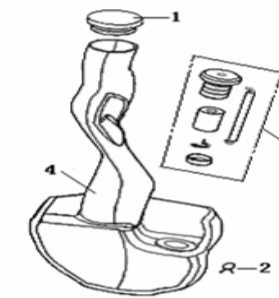
F12 REAR SHOCK ABSORBER ASSY.

| NO. | CODE | DESCRIPTION | QTY. | NOTES | SEASON | OLD NUMBERS |
|-----|--------------|---------------------------|------|-------|--------|-------------|
| 1 | 63100B20TM91 | ABSORBER ASSY.(ORANGE M9) | 1 | | 2007 | |
| 1 | 63100B20TR81 | ABSORBER ASSY.(RED R8) | 1 | | 2007 | |
| 1 | 63100B20TBH1 | ABSORBER ASSY.(BLACK BH) | 1 | | 2007 | |
| 1 | 63100B20TEN1 | ABSORBER ASSY.(BLUE EN) | 1 | | 2007 | |
| 2 | B01070804064 | BOLT 8X40MM | 1 | | | |
| 3 | B01071004064 | BOLT 10X1.25X 40MM | 1 | | | |
| 4 | B04070008064 | NUT M8MM | 1 | | | |



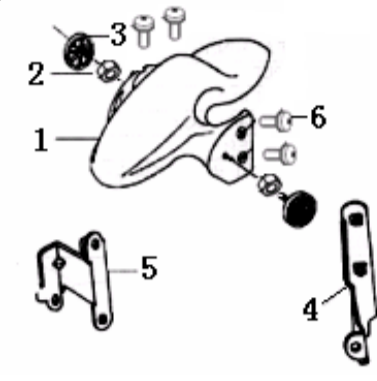
F13 OIL TANK ASSY.

| NO. | CODE | DESCRIPTION | QTY. | NOTES | SEASON | OLD NUMBERS |
|-----|--------------|----------------------|------|-------|--------|-------------|
| 1 | 64091B20T000 | CAP, OIL TANK | 1 | | | |
| 2 | 50307BM0T000 | CLIPφ8 | 2 | | | |
| 3 | 64100B20T000 | SENSOR, OIL POSITION | 1 | | | |
| 4 | 64001B20T000 | OIL TANK | 1 | | | |



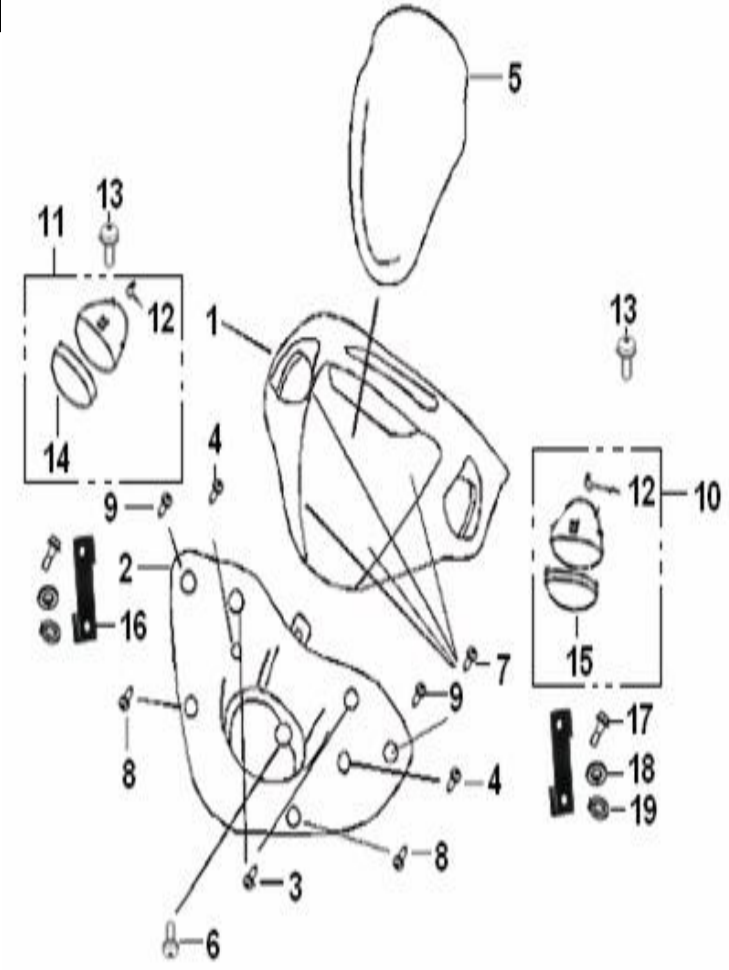
F14 FRONT FENDER ASSY.

| NO. | CODE | DESCRIPTION | QTY. | NOTES | SEASON | OLD NUMBERS |
|-----|--------------|---------------------------|------|-------|--------|---------------------|
| 1 | 65101BMBTBH0 | FENDER ,FRONT, (BLACK BH) | 1 | | 2007 | |
| 1 | 65101BMBTCE0 | FENDER ,FRONT,(SILVER CE) | 1 | | 2007 | |
| 2 | B04070600064 | NUT M6 | 2 | | | B04070600054 |
| 3 | 86300B20T001 | FRONT REFLECTOR (DOT) | 2 | | | |
| 4 | 65130B20T000 | FENDER ,FRONT, LH.BRACKET | 1 | | | |
| 5 | 65140B20T000 | FENDER ,FRONT, RH.BRACKET | 1 | | | |
| 6 | 65114BMBT000 | FENDER SCREW,FRONT | 4 | | | |



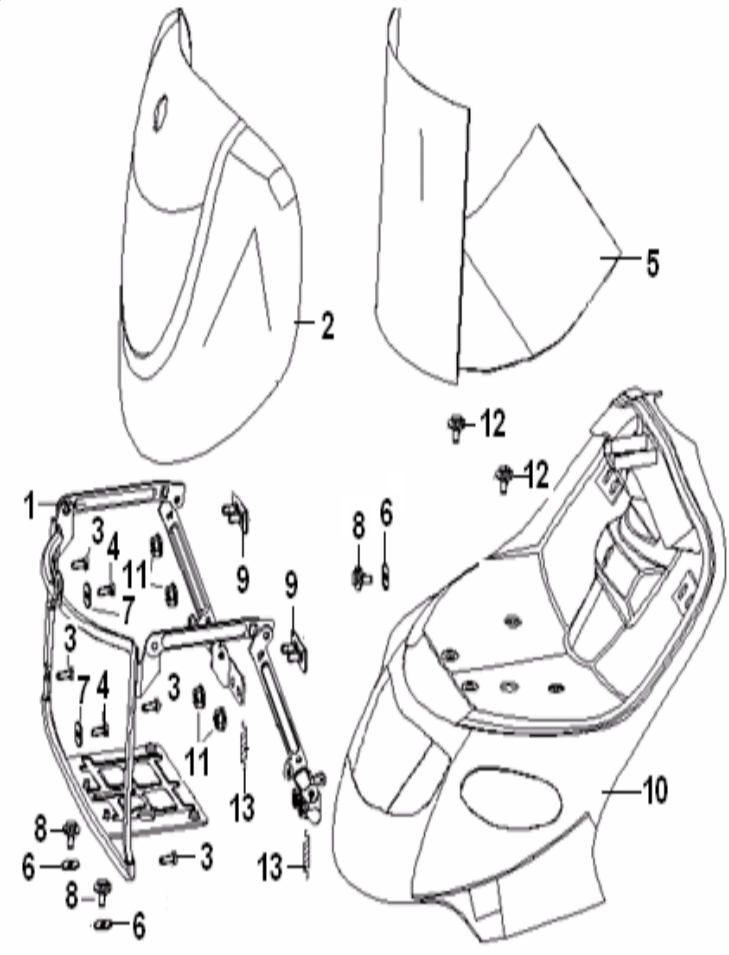
F15 HANDLE COVER ASSY.

| NO. | CODE | DESCRIPTION | QTY. | NOTES | SEASON | OLD NUMBERS |
|-----|--------------|--|------|---|-----------|--------------|
| 1 | 65201BMBTBH0 | HANDLE COVER, UP,(BLACK BH) | 1 | used for Keeway Hurricane 50 in color | 2007 | 65201BMBTBH1 |
| 1 | 65201BMBTCE0 | HANDLE COVER, UP, (SILVER CE) | 1 | used for Keeway Hurricane 50 in color | 2007 | 65201BMBTCE1 |
| 1 | 65201BMBTWF2 | HANDLE COVER, UP, (WHITE WF) | 1 | used for Keeway Hurricane 50 in color for EPA market White WF & Red/White | | |
| 2 | 65203B20T000 | HANDLE COVER, DOWN | 1 | | | |
| 3 | B05075001605 | TAPPING SCREW,ST5X16 | 2 | | | |
| 4 | B05074001605 | TAPPING SCREW,ST4X16 | 2 | | | |
| 5 | 65203BMBT000 | METER VISION ASSY.(Silver) | 1 | used before 2008 | 2006-2007 | |
| 5 | 65203BMBTD50 | METER VISION ASSY.(Carbon Fibre, Watermark D5) | 1 | | | |
| 6 | B13010501405 | SCREW,5X14 | 1 | | | |
| 7 | B05073001005 | TAPPING SCREW,ST3X10 | 4 | | | |
| 8 | B05075001205 | TAPPING SCREW,ST5X12 | 2 | | | |
| 9 | B05074001205 | TAPPING SCREW,ST4X12 | 2 | | | |
| 10 | 81100B20T002 | FLASHER LIGHT ASSY., 1 MARK:DOT/VEINTO | 1 | | | |
| 11 | 81300B20T002 | FLASHER LIGHT ASSY., 2 MARK:DOT/VEINTO | 1 | | | |
| 12 | B24012120000 | BULB, 12V/10W | 2 | | | 81004BMBT000 |
| 13 | 08005AE0D000 | SCREW W/WASHER 5X11.5 | 2 | | | B13060501205 |
| 14 | 81302B20T000 | LIGHT COVER, RH. | 1 | | | 81302B20T001 |
| 15 | 81102B20T000 | LIGHT COVER, LH. | 1 | | | 81102B20T001 |



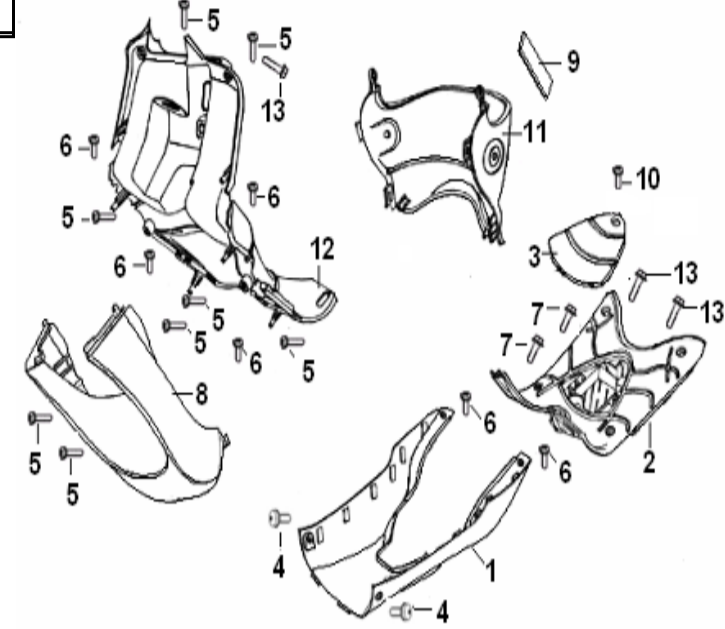
F16 FRONT COVER ASSY.

| NO. | CODE | DESCRIPTION | QTY. | NOTES | SEASON | OLD NUMBERS |
|-----|--------------|---|------|-------------------------------|--------|--------------|
| 1 | 65340B20T000 | FRAME, FRONT | 1 | | | |
| 2 | 65301B20TM90 | FACEPLATE,(ORANGE M9), without stickers | 1 | used for orange M9 vehicle | 2007 | |
| 2 | 65301B20TR80 | FACEPLATE,(RED R8), without stickers | 1 | used for red R8 vehicle | 2007 | |
| 2 | 65301B20THN0 | FACEPLATE,(SILVER HN), without stickers | 1 | used for deep gray HN vehicle | 2007 | |
| 2 | 65301B20TEN0 | FACEPLATE,(BLUE EN), without stickers | 1 | used for blue EN vehicle | 2007 | |
| 3 | B05074201304 | TAPPING SCREW ST4.2X13 | 4 | | | B05004201604 |
| 4 | B05074201604 | TAPPING SCREW ST4.2X16 | 2 | | | B05004201604 |
| 5 | 65390B20T000 | FRONT RACK | 1 | | | |
| 6 | B07020000605 | WASHER 6 | 3 | | | B07020000604 |
| 7 | B07020000504 | WASHER 5 | 2 | | | |
| 8 | B01010601664 | BOLT M6X16 | 3 | | | B01010601665 |
| 9 | 65330B20T000 | FIXING SEAT | 2 | | | |
| 10 | 65302B20T000 | MOTHERBOARD, FRONT COVER | 1 | | | |
| 11 | B04070600064 | NUT M6 | 4 | | | B04070600054 |
| 12 | B01070602024 | BOLT M6X20 | 2 | | | B01010602065 |



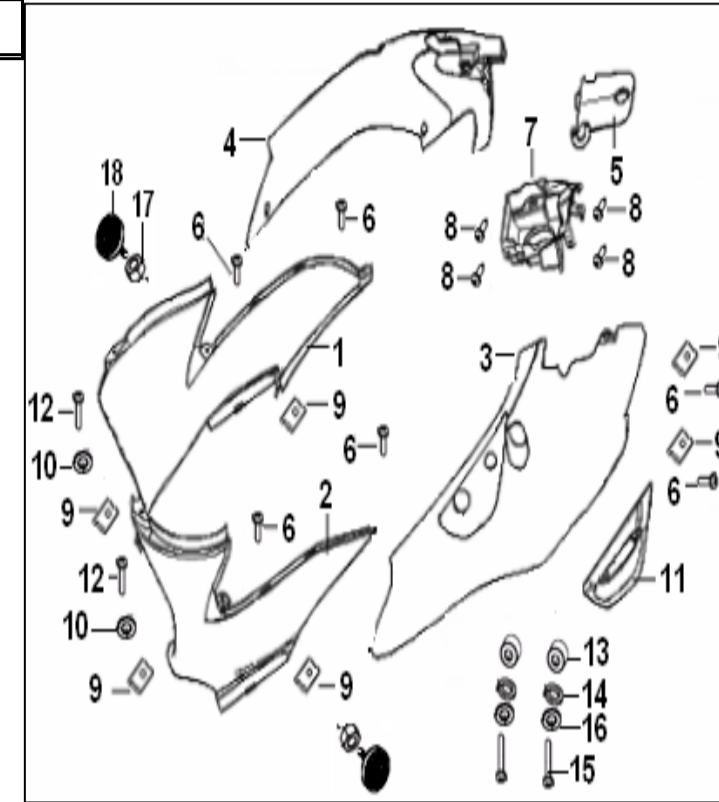
F17 LEG SHIELD ASSY.

| NO. | CODE | DESCRIPTION | QTY. | NOTES | SEASON | OLD NUMBERS |
|-----|--------------|--|------|--|--------|---------------------|
| 1 | 65407B20TBH0 | COVER LOWER II ,(BLACK BH) ,without stickers | 1 | used for orange M9,red RR deep crav HN | 2007 | |
| 1 | 65407B20TEN0 | COVER LOWER II ,(BLUE EN) ,without stickers | 1 | used for blue EN vehicle | 2007 | |
| 2 | 65401B20T000 | FOOTPLATE | 1 | | | |
| 3 | 65411B20T000 | CAP FOOTPLATE | 1 | | | |
| 4 | B13060601605 | SCREW M6x16 | 2 | | | |
| 5 | B05074201605 | TAPPING SCREW , ST4.2X16 | 8 | | | B05004201605 |
| 6 | B05074201305 | TAPPING SCREW, ST4.2x13 | 6 | | | B05004201305 |
| 7 | B01070601265 | BOLT M6X12 | 2 | | | |
| 8 | 65406B20T000 | COVER LOWER I, without stickers | 1 | | | |
| 9 | 65403B20T000 | INSPECT COVER | 1 | | | |
| 10 | B05074802005 | SCREW ST4.8x20 | 1 | | | B02000502005 |
| 11 | 65404B20T000 | COVER,FRONT LUGGAGE BOX | 1 | | | |
| 12 | 65402B20T000 | COVER, REAR | 1 | | | |
| 13 | B01070601665 | BOLT M6x16 | 3 | | | B01070601605 |



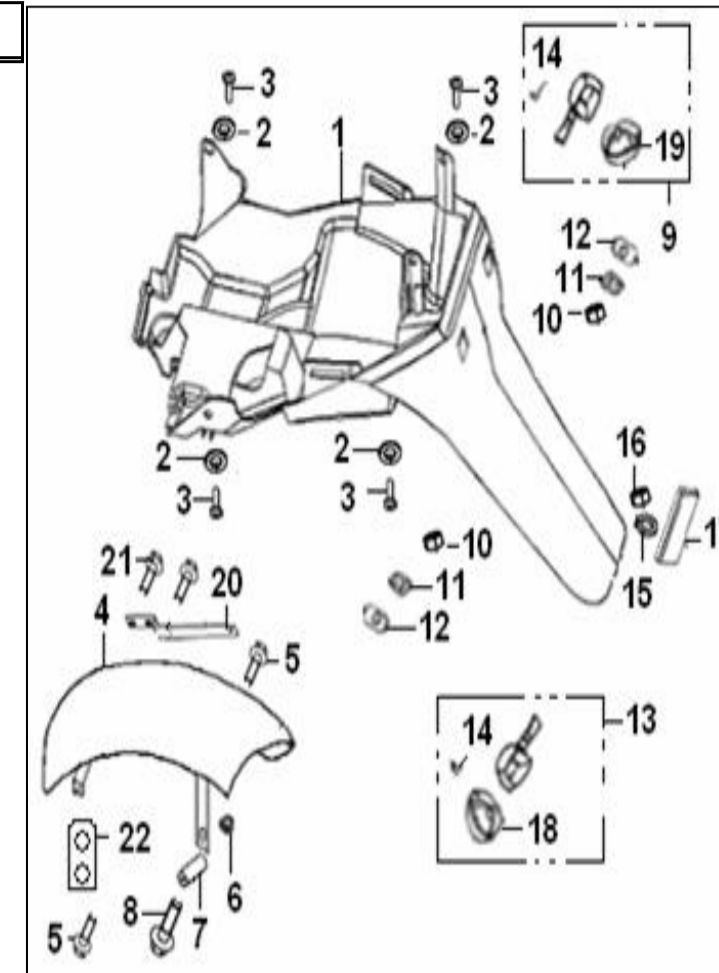
F18 FRAME COVER ASSY.

| NO. | CODE | DESCRIPTION | QTY. | NOTES | SEASON | OLD NUMBERS |
|-----|--------------|--|------|---|--------|--------------|
| 1 | 65603B20T001 | COVER FRONT RH (For EPA(north america) Market) | 1 | | | 65603B20T000 |
| 2 | 65601B20T001 | COVER FRONT LH | 1 | | | 65601B20T000 |
| 3 | 65604B20TBH0 | COVER REAR LH,(BLACK BH), without stickers | 1 | used for orange M9,red RR deep arav HN | 2007 | |
| 3 | 65604B20TCE0 | COVER REAR LH,(SILVER CE), without stickers | 1 | for blue EN vehicle (Keewaw Hurricane 50) | 2007 | |
| 4 | 65602B20TBH0 | COVER REAR RH, (BLACK BH) without stickers | 1 | used for orange M9,red RR deep arav HN | 2007 | |
| 4 | 65602B20TCE0 | COVER REAR RH,(SILVER CE) without stickers | 1 | for blue EN vehicle (Keewaw Hurricane 50) | 2007 | |
| 5 | 65606B20TBH0 | COUPLING BOARD,(BLACK BH) | 1 | used for orange M9,red RR deep arav HN | 2007 | |
| 5 | 65606B20TCE0 | COUPLING BOARD,(SILVER CE) | 1 | for blue EN vehicle (Keewaw Hurricane 50) | 2007 | |
| 6 | B05070421605 | TAPPING SCREW ST4.2x16 | 6 | | | B05070401205 |
| 7 | 65615B20T000 | BOARD, FUEL TANK FIXING | 1 | | | |
| 8 | B05070401005 | TAPPING SCREW, ST4x10 | 4 | | | |
| 9 | 65801B20T000 | CARD | 6 | | | B05004201305 |
| 10 | B07030000504 | WASHER 5MM | 2 | | | 65801B20T000 |
| 11 | 65612B20T000 | HANDLE, LH | 1 | | | |
| 12 | B05074201605 | TAPPING SCREW, ST4.2x16 | 2 | | | B05004201605 |
| 13 | 65613B20T000 | BUSH, HANDLE | 2 | | | |
| 14 | B07030000604 | WASHER 6 | 2 | | | B07010000604 |
| 15 | B02000603064 | SCREW M6x30 | 2 | | | B02000602564 |
| 16 | B07000000604 | WASHER SPRING 6 | 2 | | | |
| 17 | B04070600064 | NUT,M6 | 2 | | | B04070600054 |
| 18 | 86400B20T001 | REAR REFLECTOR | 2 | | | |



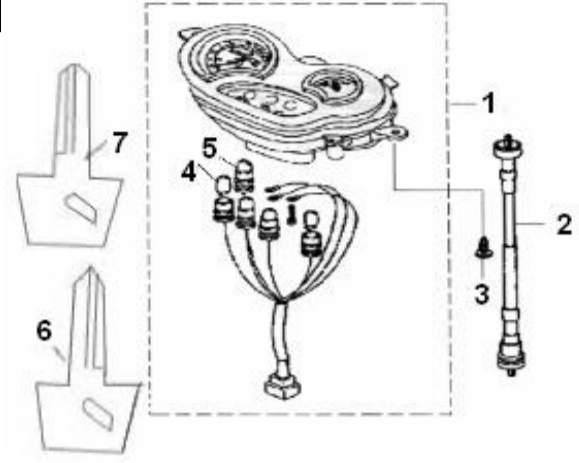
F19 REAR FENDER ASSY.

| NO. | CODE | DESCRIPTION | QTY. | NOTES | SEASON | OLD NUMBERS |
|-----|--------------|-----------------------------------|------|---|--------|--------------|
| 1 | 65701B20T000 | FENDER, REAR | 1 | | | |
| 2 | B07020000605 | WASHER 6 | 4 | | | B07020000604 |
| 3 | B01010601625 | BOLT M6x16 | 4 | | | B01010601664 |
| 4 | 65701B030001 | TAIL, REAR FENDER | 1 | start VIN TSYTAR212RR709890 | | 65702B20T000 |
| 5 | B01070601265 | BOLT M6X12 | 2 | | | |
| 6 | 65810B20T000 | FIT NUT ASSY,FENDER | 1 | | | |
| 7 | 65763B20T000 | FIT BUSH,FENDER | 1 | | | |
| 8 | B01090604263 | BOLT M6X42 | 1 | | | B01090604265 |
| 9 | 81700B20T002 | TURN LIGHT,F.R.E-MARK: DOT/VEINTO | 1 | | | |
| 10 | B04021012554 | NUT M10X1.25 | 2 | | | |
| 11 | 81703B20T000 | RUBBERCUSHION,REARTURNLIGHT | 2 | | | |
| 12 | 81704B20T000 | CUSHION,REAR TURN LIGHT | 2 | | | |
| 13 | 81500B20T002 | TURN LIGHT,R.LH. MARK: DOT/VEINTO | 1 | | | |
| 14 | B24012120000 | BULB, 12V/10W | 2 | | | 81004BMBT000 |
| 15 | B07020000505 | WASHER 5 | 1 | | | |
| 16 | B04000500065 | NUT M5 | 1 | | | |
| 17 | 86500B20T001 | REAR REFLECTOR E-MARK: DOT | 1 | | | |
| 18 | 81302B20T000 | LIGHT COVER, R. | 1 | | | 81302B20T001 |
| 19 | 81102B20T000 | LIGHT COVER, LH. | 1 | | | 81102B20T001 |
| 20 | 57861B20T001 | REAR FENDER BRACKET | 1 | Only used for SPORTY MI IFFI FR in FPA | | |
| 21 | B01090601264 | BOLT 6X12MM | 2 | Only used for SPORTY MI IFFI FR in FPA | | |
| 22 | 65770B20T000 | BRACKET ASSY | 1 | | | |
| 26 | 08305G120050 | BUSH | 1 | start VIN ----- | 2010 | |



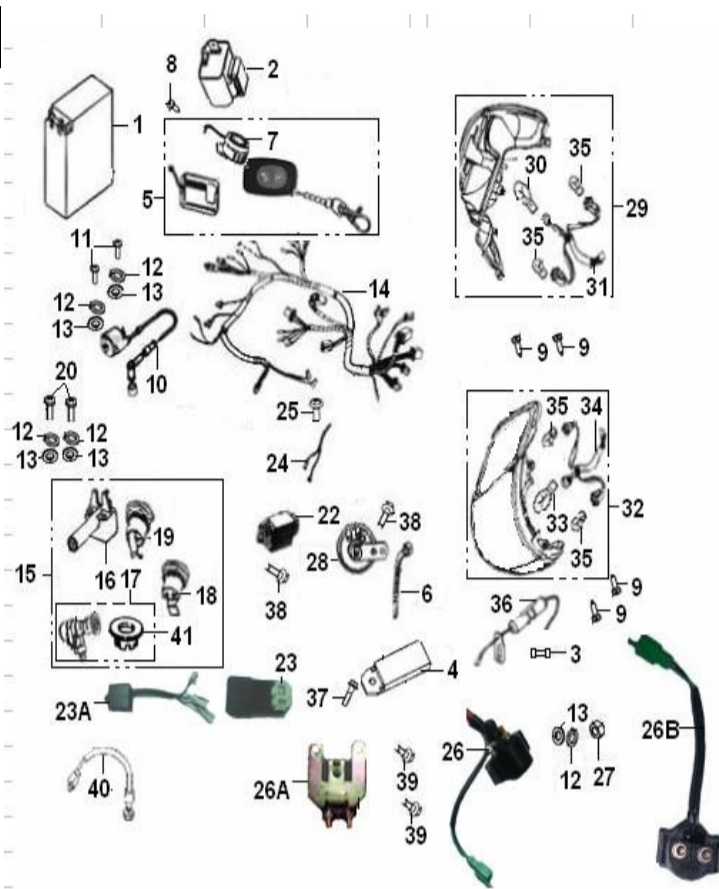
SPEEDOMETER ASSY.

| NO. | CODE | DESCRIPTION | QTY. | NOTES | SEASON | OLD NUMBERS |
|-----|--------------|-------------------------|------|-------|--------------|-------------|
| 1 | 7000B920038 | SPEEDOMETER ASSY. | 1 | | | |
| 2 | 72900J4FT000 | CABLE ASSY, SPEEDOMETER | 1 | | | |
| 3 | B05074001205 | TAPPING SCREW ST4X12 | 3 | | | |
| 4 | B24012920000 | BULB 12V-3W | 2 | | 70001BMBT000 | |
| 5 | B24020221100 | BULB 12V-2W | 3 | | 70036BMBT000 | |
| 6 | 88900B03000X | KEY NUT LEFT | 1 | | | |
| 7 | 88900B03001X | KEY NUT RIGHT | 1 | | | |



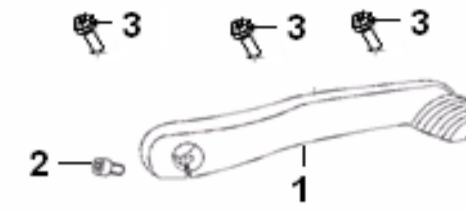
F21 ELECTRICAL EQUIPMENT ASSY.

| NO. | CODE | DESCRIPTION | QTY. | NOTES | SEASON | OLD NUMBERS |
|-----|--------------|---|------|--|--------|--------------|
| 1 | 96100BM0T000 | BATTERY ASSY. 12V,4AH (YTX5L-BS) | 1 | used for vehicle with YTX5L-RS battery | | 96100B20T000 |
| 2 | 96400K00P001 | FLASHER (Manual type) | 1 | | | |
| 3 | 96800B20T000 | FUSE COMP | 1 | | | |
| 6 | 96001B20T000 | BAND 8X200 | 4 | | | |
| 9 | B05074801305 | TAPPING SCREW ST4.8x13 | 4 | | | B05004801305 |
| 10 | 96200B0DT000 | COIL ASSY.,IGNITION | 1 | | | |
| 11 | B02000602064 | SCREW M6x20 | 2 | | | |
| 12 | B07000000604 | WASHER SPRING 6 | 5 | | | |
| 13 | B07030000604 | WASHER 6 | 5 | | | B07010000604 |
| 14 | 92000B20T00G | HARNESS, WIRING (with waterproof socket,Mark "DOT") | 1 | | | |
| 14 | 92000B03001G | HARNESS, WIRING | 1 | | | |
| 15 | 88000B20T00A | LOCK COMP.(with waterproof socket) | 1 | | | |
| 16 | 88800B20T000 | SEAT LOCK | 1 | | | |
| 17 | 88100B20T00A | LOCK ASSY. STEERING ,(with waterproof socket) | 1 | | | |
| 18 | 88400B20T000 | LOCK FUEL TANK | 1 | | | |
| 19 | 88200B20T000 | LOCK, FRONT LUGGAGE BOX | 1 | | | |
| 20 | B02000604024 | SCREW M6x40 | 2 | | | B02000604064 |
| 21 | 08002B20T000 | BOLT M6x20 | 4 | | | |
| 21 | B01090601665 | BOLT 6x16MM | 2 | only used for Q16-91 | | |
| 22 | 98801J0ET000 | RECTIFIER | 1 | | | |
| 23A | 97701BM0T000 | C.D.I. UNIT COMP. | 1 | | | 97701BM0T001 |
| 24 | 96900B00T000 | WIRE, EARTH | 1 | | | |
| 26 | 94000B20T000 | RELAY ASSY.,STARTER | 1 | stop supplied, for VIN before | | |
| 26A | 94100J000002 | RELAY ASSY.,STARTER | 1 | new type relay, start VIN NO | | 94000B20T000 |
| 26B | 94100K240000 | STARTER RELAY COMP. | 1 | for VIN before NO TSYTAR2128R507 | | 94000B20T000 |
| 27 | B04000600054 | NUT M6 | 1 | | | B04000600064 |
| 28 | 95000B50T000 | HORN ASSY. | 1 | | | |
| 29 | 82008B20T001 | TAIL LIGHT ASSY,RR DOT/VENTO | 1 | | | |
| 30 | B24013820000 | TAIL LIGHT BULB 12V/21W/5W | 1 | | | 82005B20T000 |
| 31 | 82900B20T001 | WIRING ASSY. TAIL LIGHT | 1 | | | |
| 32 | 80004B20T001 | HEADLIGHT COMP. DOT/VEINTO | 1 | | | 80000B030001 |
| 33 | B24010520000 | HEADLIGHT BULB 12V35/35W | 1 | | | 80002B20T000 |
| 34 | 80020B20T000 | WIRING ASSY.HEAD LIGHT | 1 | | | |
| 35 | B24020321102 | INDICATOR BULB 12V/3W | 4 | | | 81004B50T000 |
| 36 | 96810B20T000 | FUSE | 1 | | | |
| 38 | B01090601665 | BOLT 6x16MM | 2 | | | |
| 39 | B01090601065 | BOLT 6x10MM | 2 | Used with new type relay (NO 26A) | | |
| 40 | 92200A020001 | WIRE | 1 | | | |
| 41 | 88101B030000 | COVER MAIN SWITCH mark:on,off | 1 | | | |



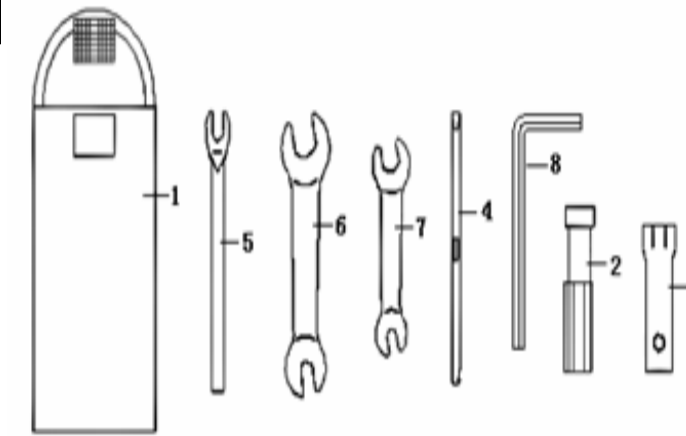
F22 ENGINE ATTACHMENT

| NO. | CODE | DESCRIPTION | QTY. | NOTES | SEASON | OLD NUMBERS |
|-----|--------------|--|------|-----------------|-----------|-------------|
| 1 | 08351BM0TC10 | KICK STARTER ASSY. | 1 | for 2007 season | 2006-2007 | |
| 1 | 08351BM0THU0 | KICK STARTER ASSY.SILVER GRAY HU (for 2008 season) | 1 | for 2008 season | 2008 | |
| 2 | B02050602565 | BOLT M6X25 | 1 | | | |
| 3 | B01070602564 | BOLT 6X25MM | 2 | | | |



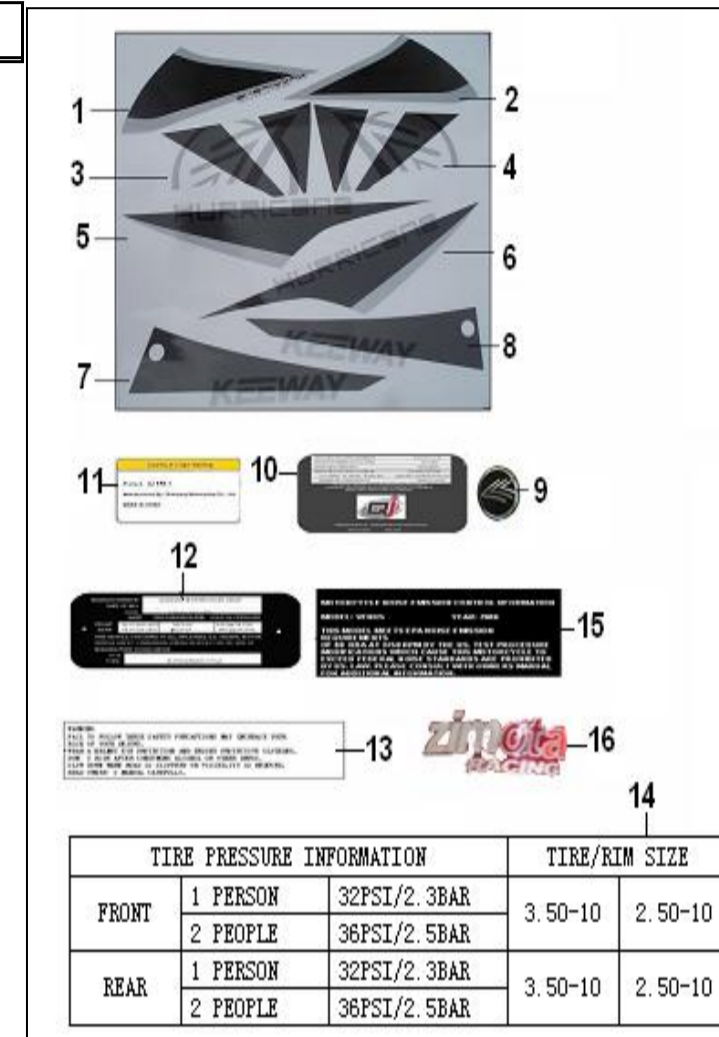
F23 TOOL KIT ASSY.

| NO. | CODE | DESCRIPTION | QTY. | NOTES | SEASON | OLD NUMBERS |
|-----|--------------|----------------------------|------|-------|--------|------------------------------------|
| 1 | 02110G00P000 | BAG, TOOL KIT | 1 | | | |
| 2 | 02104G00P000 | HANDLE, SCREW DRIVER | 1 | | | |
| 3 | 02101B20T000 | SOCKET, SPARK PLUG | 1 | | | |
| 4 | 02103G00P000 | DRIVER, DOUBLE-ENDED | 1 | | | |
| 5 | 02108G00P000 | WRENCH | 1 | | | |
| 6 | B20011301603 | WRENCH, DOUBLE-ENDED 13-16 | 1 | | | B200113-1600 / B20011301600 |
| 7 | B20011001203 | WRENCH, DOUBLE-ENDED 10-12 | 1 | | | B200110-1200 / B20011001200 |
| 8 | B20020600003 | SOCKET SPANNER 6 | 1 | | | B20020600000 |



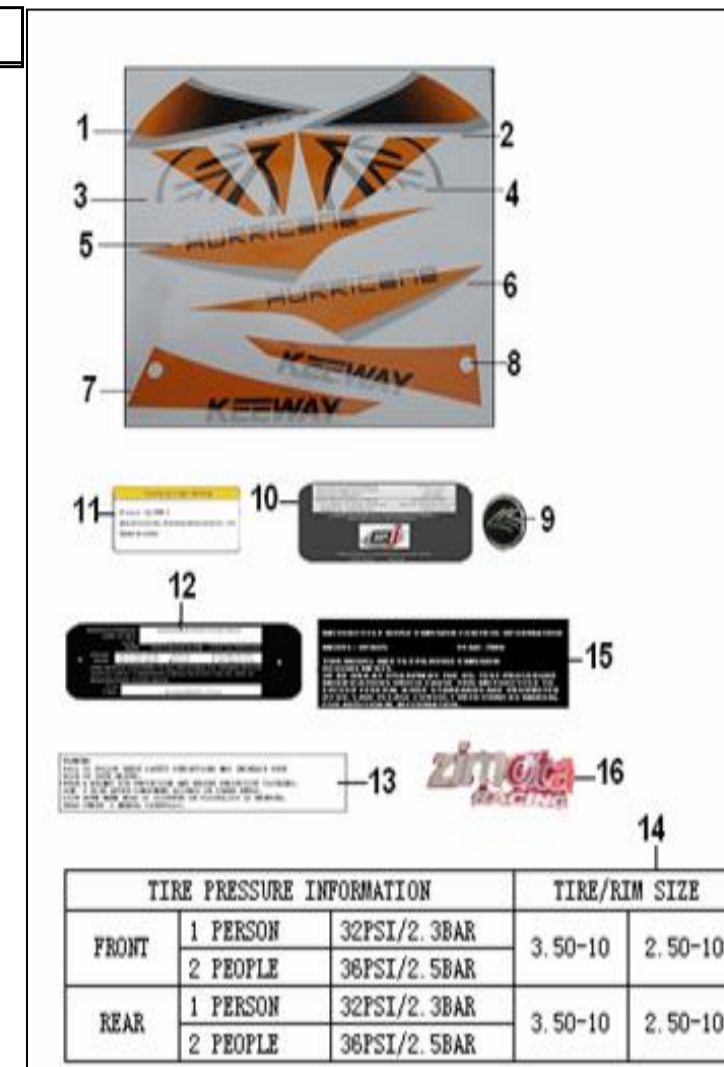
F24.1 STICKER for Gray HN vehicle

| NO. | CODE | DESCRIPTION | QTY. | NOTES | SEASON | OLD NUMBERS |
|-----|--------------|----------------------------------|------|-------|--------|-------------|
| 1 | 05522B20THNA | FRONT FENDER RIGHT STICKER | 1 | | 2007 | |
| 2 | 05521B20THNA | FRONT FENDER LEFT STICKER SILVER | 1 | | 2007 | |
| 3 | 05542B20THNA | STICKER,FENDER LEFT COVER I | 1 | | 2007 | |
| 4 | 05543B20THNA | STICKER,FENDER RIGHT COVER I | 1 | | 2007 | |
| 5 | 05512B20THNA | STICKER,RIGHT SIDE COVER | 1 | | 2007 | |
| 6 | 05513B20THNA | STICKER,LEFT SIDE COVER | 1 | | 2007 | |
| 7 | 05545B20THNA | STICKER,FENDER LEFT COVER II | 1 | | 2007 | |
| 8 | 05544B20THNA | STICKER,FENDER RIGHT COVER II | 1 | | 2007 | |
| 9 | 05525BMBT004 | MARK ,BIRD BLACK | 1 | | 2007 | |
| 10 | 05531B20T000 | EPA STICKER (2007 EPA) | 1 | | 2007 | |
| 10 | 05568B03000B | EPA STICKER (2008 EPA) | 1 | | 2008 | |
| 11 | 05504B20T000 | STICKER,FR. COVER of HELMET BOX | 1 | | 2007 | |
| 12 | 57001B20T00J | PLATE, FRAME LABEL(U.S.A. VER.) | 1 | | 2007 | |
| 13 | 05535B20T000 | WARNING STICKER (EPA) | 1 | | 2007 | |
| 14 | 05533B20T000 | TIRE PRESSURE STICKER (EPA) | 1 | | 2007 | |
| 15 | 05536B20T000 | NOISE CONTROL 2 (2007 EPA) | 1 | | 2007 | |
| 15 | 05536B030007 | NOISE CONTROL 2 (2008 EPA) | 1 | | 2008 | |



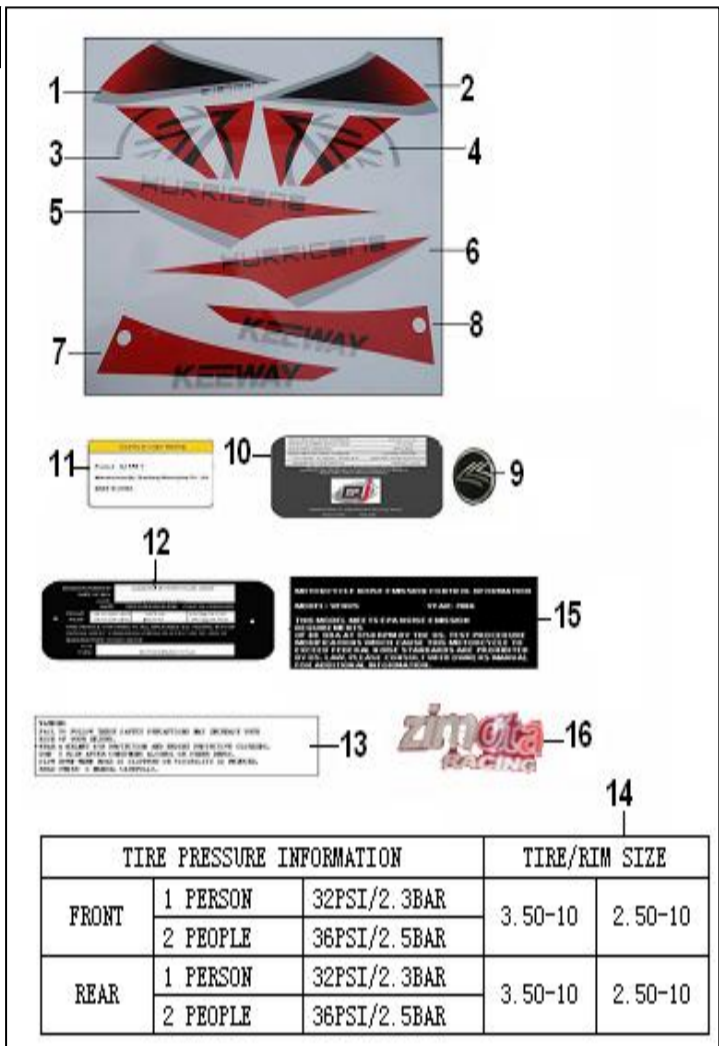
F24.2 STICKER for Orange M9 vehicle

| NO. | CODE | DESCRIPTION | QTY. | NOTES | SEASON | OLD NUMBERS |
|-----|--------------|---------------------------------|------|-------|--------|-------------|
| 1 | 05522B20TM9A | FRONT FENDER RIGHT STICKER | 1 | | 2007 | |
| 2 | 05521B20TM9A | FRONT FENDER LEFT STICKER | 1 | | 2007 | |
| 3 | 05542B20TM9A | STICKER,FENDER LEFT COVER I | 1 | | 2007 | |
| 4 | 05543B20TM9A | STICKER,FENDER RIGHT COVER I | 1 | | 2007 | |
| 5 | 05512B20TM9A | STICKER,RIGHT SIDE COVER | 1 | | 2007 | |
| 6 | 05513B20TM9A | STICKER,LEFT SIDE COVER | 1 | | 2007 | |
| 7 | 05545B20TM9A | STICKER,FENDER LEFT COVER II | 1 | | 2007 | |
| 8 | 05544B20TM9A | STICKER,FENDER RIGHT COVER II | 1 | | 2007 | |
| 9 | 05525BMBT004 | MARK ,BIRD BLACK | 1 | | 2007 | |
| 10 | 05531B20T000 | EPA STICKER (2007 EPA) | 1 | | 2007 | |
| 10 | 05568B03000B | EPA STICKER (2008 EPA) | 1 | | 2008 | |
| 11 | 05504B20T000 | STICKER,FR. COVER of HELMET BOX | 1 | | 2007 | |
| 12 | 57001B20T00J | PLATE, FRAME LABEL(U.S.A. VER.) | 1 | | 2007 | |
| 13 | 05535B20T000 | WARNING STICKER (EPA) | 1 | | 2007 | |
| 14 | 05533B20T000 | TIRE PRESSURE STICKER (EPA) | 1 | | 2007 | |
| 15 | 05536B20T000 | NOISE CONTROL 2 (2007 EPA) | 1 | | 2007 | |
| 15 | 05536B030007 | NOISE CONTROL 2 (2008 EPA) | 1 | | 2008 | |



F24.3 STICKER for Red R8 vehicle

| NO. | CODE | DESCRIPTION | QTY. | NOTES | SEASON | OLD NUMBERS |
|-----|--------------|---------------------------------|------|-------|--------|-------------|
| 1 | 05522B20TR8A | FRONT FENDER RIGHT STICKER | 1 | | 2007 | |
| 2 | 05521B20TR8A | FRONT FENDER LEFT STICKER | 1 | | 2007 | |
| 3 | 05542B20TR8A | STICKER,FENDER LEFT COVER I | 1 | | 2007 | |
| 4 | 05543B20TR8A | STICKER,FENDER RIGHT COVER I | 1 | | 2007 | |
| 5 | 05512B20TR8A | STICKER,RIGHT SIDE COVER | 1 | | 2007 | |
| 6 | 05513B20TR8A | STICKER,LEFT SIDE COVER | 1 | | 2007 | |
| 7 | 05545B20TR8A | STICKER,FENDER LEFT COVER II | 1 | | 2007 | |
| 8 | 05544B20TR8A | STICKER,FENDER RIGHT COVER II | 1 | | 2007 | |
| 9 | 05525BMBT004 | MARK ,BIRD BLACK | 1 | | 2007 | |
| 10 | 05531B20T000 | EPA STICKER (2007 EPA) | 1 | | 2007 | |
| 10 | 05568B03000B | EPA STICKER (2008 EPA) | 1 | | 2008 | |
| 11 | 05504B20T000 | STICKER,HELMET BOX FR COVER | 1 | | 2007 | |
| 12 | 57001B20T00J | PLATE, FRAME LABEL(U.S.A. VER.) | 1 | | 2007 | |
| 13 | 05535B20T000 | WARNING STICKER (EPA) | 1 | | 2007 | |
| 14 | 05533B20T000 | TIRE PRESSURE STICKER (EPA) | 1 | | 2007 | |
| 15 | 05536B20T000 | NOISE CONTROL 2 (2007 EPA) | 1 | | 2007 | |
| 15 | 05536B030007 | NOISE CONTROL 2 (2008 EPA) | 1 | | 2008 | |



F24.4 STICKER for Blue EN vehicle

| NO. | CODE | DESCRIPTION | QTY. | NOTES | SEASON | OLD NUMBERS |
|-----|--------------|---------------------------------|------|-------|--------|-------------|
| 1 | 05522B20TENA | FRONT FENDER RIGHT STICKER | 1 | | 2007 | |
| 2 | 05521B20TENA | FRONT FENDER LEFT STICKER | 1 | | 2007 | |
| 3 | 05542B20TENA | STICKER,FENDER LEFT COVER I | 1 | | 2007 | |
| 4 | 05543B20TENA | STICKER,FENDER RIGHT COVER I | 1 | | 2007 | |
| 5 | 05512B20TENA | STICKER,RIGHT SIDE COVER | 1 | | 2007 | |
| 6 | 05513B20TENA | STICKER,LEFT SIDE COVER | 1 | | 2007 | |
| 7 | 05545B20TENA | STICKER,FENDER LEFT COVER II | 1 | | 2007 | |
| 8 | 05544B20TENA | STICKER,FENDER RIGHT COVER II | 1 | | 2007 | |
| 9 | 05525BMBT004 | MARK ,BIRD BLACK | 1 | | 2007 | |
| 10 | 05531B20T000 | EPA STICKER (2007 EPA) | 1 | | 2007 | |
| 10 | 05568B03000B | EPA STICKER (2008 EPA) | 1 | | 2007 | |
| 11 | 05504B20T000 | STICKER,HELMET BOX FR COVER | 1 | | 2007 | |
| 12 | 57001B20T00J | PLATE, FRAME LABEL(U.S.A. VER.) | 1 | | 2007 | |
| 13 | 05535B20T000 | WARNING STICKER (EPA) | 1 | | 2007 | |
| 14 | 05533B20T000 | TIRE PRESSURE STICKER (EPA) | 1 | | 2007 | |
| 15 | 05536B20T000 | NOISE CONTROL 2 (2007 EPA) | 1 | | 2007 | |
| 15 | 05536B030007 | NOISE CONTROL 2 (2008 EPA) | 1 | | 2007 | |



F25 BACK BOX ASSY

| NO. | CODE | DESCRIPTION | QTY. | NOTES | SEASON | OLD NUMBERS |
|-----|--------------|---------------------------|------|-----------------------|--------|---------------------|
| 1 | 52200B20TM90 | BACK BOX ASSY (ORANGE M9) | 1 | for orange M9 vehicle | 2007 | |
| 1 | 52200B20TR80 | BACK BOX ASSY (RED R8) | 1 | for Red R8 vehicle | 2007 | |
| 1 | 52200B20THN0 | BACK BOX ASSY (SILVER HN) | 1 | for Grey HN vehicle | 2007 | |
| 1 | 52200B20TEN0 | BACK BOX ASSY (BLUE EN) | 1 | for Blue EN vehicle | 2007 | |
| 2 | B01010602524 | BOLT M6X25 | 4 | | | B01010602564 |
| 3 | 88600BMBT000 | BACK BOX LOCK | 1 | | | |
| 4 | 52221BMBT000 | WASHER | 4 | | | |
| 5 | B07020000604 | WASHER 6 | 4 | | | |
| 6 | B07000000604 | WASHER SPRING , 6 | 4 | | | |
| 7 | B04000600055 | NUT M6 | 4 | | | B04000600065 |
| 8 | B01010601224 | BOLT 6X12MM | 4 | | | B01010601264 |
| 9 | 52183B20T000 | FIX BOARD | 1 | | | |
| 10 | 52181B20T000 | FIX BOARD I | 1 | | | |
| 11 | 52182B20T000 | FIX BOARD II | 1 | | | |
| 12 | 05591BMBT000 | BACK BOX COVER | 1 | | | |
| 13 | B01070601663 | SCREW M6x16 | 2 | | | |
| 14 | 52910BMBT000 | NUT,CLIPPING M6 | 2 | | | |

