



ETON America, LLC

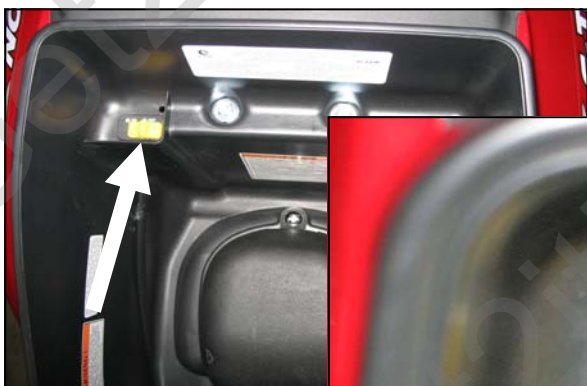


Service Bulletin

Bulletin No: 0053
Date: 07/08/2008

2009 Eton Sport 50 Anti-Theft System

The 2009 Eton Sport 50 is equipped with an anti theft system. The switch is located under the seat shown in the figures below. If the switch is in the on, (locked), position the bike will not start. During setup set the switch to the off, (unlocked), position before trying to start the unit. To access this anti theft switch, turn the key to the LH position to release the seat, the switch is on the RH side of the storage box if you're sitting on the bike, as shown in the pictures below.



With the switch in the on, (locked), position the starter motor will still turn, however the unit will not start.

If you have a no fire situation at the spark plug, check to insure that the Anti-Theft switch is in the OFF, (Unlocked), position.